

Box Canyon Hydroelectric Project FERC No. 2042

2010 Revised Recreation Resources Management Plan

**Public Utility District No. 1 of Pend Oreille County
Newport, WA**



Prepared by:

**Howe Consulting, Inc.
1515 NW 167 St.
Shoreline, WA 98177**

and



EES Consulting

**570 Kirkland Way, Suite 200
Kirkland, WA 98033**

September 2010

Intentionally left blank

**BOX CANYON HYDROELECTRIC PROJECT
RECREATION RESOURCES MANAGEMENT PLAN
TABLE OF CONTENTS**

1	INTRODUCTION	1
2	PLAN VISION	3
3	GOALS AND OBJECTIVES	4
4	PLANNING AREA.....	7
5	PLANNING PROCESS.....	13
6	RECREATION MANAGEMENT, PLANNING AND COORDINATION.....	14
7	PUBLIC SAFETY	17
8	CONCEPT DEVELOPMENT	19
8.1	RECREATION DEVELOPMENT AND ENHANCEMENT	19
8.2	FERC LICENSE AND SECTION 4(E)ACTIONS	20
9	RECREATION PLAN AND IMPLEMENTATION SCHEDULE	22
9.1	OLDTOWN BOAT LAUNCH (OLDTOWN RIVERSIDE PARK).....	22
9.2	CUSICK BOAT LAUNCH.....	22
9.3	EAST SIDE BOAT LAUNCH	27
9.4	DISTRICT’S CAMPBELL PARK, VISITOR CENTER AND VIEWPOINT	31
9.5	IONE CITY PARK	34
9.6	HIGHWAY AND ROAD SIGNS	36
9.7	EURASION MILFOIL SIGNS	36
9.8	DEPARTMENT OF INTERIOR MODIFIED 4(E) CONDITION No. 13	37
9.9	US FOREST SERVICE REVISED 4(E) CONDITION No. 7	40
10	RESOURCE INTEGRATION AND COORDINATION	53
10.1	TECHNICAL COMMITTEE.....	53
10.2	RESOURCE INTEGRATION, COORDINATION AND IMPLEMENTATION PLANS	53
11	RECREATION MONITORING.....	55
11.1	MONITORING METHODS	55
11.2	RECREATION STANDARDS/TRIGGER POINTS/VISITOR OPINIONS	56
11.3	MONITORING REPORT	58
12	PLAN REVIEW AND REVISION	59
13	RRMP CONSULTATION.....	60
14	REFERENCES	61

ATTACHMENTS

- Attachment 1 Example Road Signs
- Attachment 2 Washington Department of Transportation Sign Fabrication Manual, Specifications for Destination Signs
- Attachment 3 Example of Invasive Species Signs at Boat Launches
- Attachment 4 RRMP Agency Consultation

LIST OF FIGURES

Table 1. Existing Facilities/Activities at Recreation Sites	9
---	---

LIST OF FIGURES

Figure 1. Recreation Study Area Map	8
Figure 2. Oldtown Riverside Park Boat Launch Site Plan	23
Figure 3. Oldtown Boat Launch With Project Boundary	24
Figure 4. Cusick Boat Launch Site Map.....	25
Figure 5. Cusick Boat Launch with Project Boundary	26
Figure 6. Gregg's Addition Boat Launch Improvements.....	28
Figure 7. Gregg's Addition Boat Launch, Dock and Ramp.....	29
Figure 8. Gregg's Addition site - Vault Toilet & Parking Area.....	29
Figure 9. Gregg's Addition - Sign on South Side of Entrance.....	30
Figure 10: Campbell Park and Box Canyon Visitor Center	31
Figure 11. Box Canyon Viewpoint.....	32
Figure 12. Campbell Park, Box Canyon Dam Visitor Center and Viewpoint Site Map with Project Boundary	33
Figure 13. Ione City Park Boat Launch	34
Figure 14. Ione City Park Site Map with Project Boundary	35
Figure 15. Kalispel Boat Launch/Pow Wow Grounds with Project Boundary	38
Figure 16. Manresa Grotto Beach with Project Boundary	39
Figure 17. Edgewater Campground and Boat Launch with Project Boundary	42
Figure 18. Panhandle Campground and Boat Launch with Project Boundary	43
Figure 19. Pioneer Park with Project Boundary	44
Figure 20. USFS Old Ruby Ferry East Landing Site with Project Boundary	46
Figure 21. USFS Old Ruby Ferry Landing Site Topography, Barrier and Parking	47
Figure 22. Aerial Photo of Ruby Ferry Landing Site	48
Figure 23. Old Ruby Ferry Landing Site Pullout/Parking Area	48
Figure 24. USFS Old Ruby Ferry Landing Boulders to Prevent Vehicle Access and Foot Path.....	49
Figure 25. Boulders to Prevent Vehicle Access at Entrance to Old East Access Road	49
Figure 26. USFS Land North of Panhandle Campground with Project Boundary.....	50
Figure 27. USFS Land North of Panhandle Campground Site Topography and Barrier	51
Figure 28. Gravel Road/Parking Parallel to LeClerc Road	52
Figure 29. Boulders Near Parking Area to Prevent Vehicle Access	52

ACRONYMS AND ABBREVIATIONS

BCR	Box Canyon Reservoir
BIA	Bureau of Indian Affairs
BLM	Bureau of Land Management
BPA	Bonneville Power Administration
CFR	Code of Federal Regulations
DDSI	FERC's Division of Dam Safety Inspections
cfs	cubic feet per second
District	Public Utility District No. 1 of Pend Oreille County
DOI	U.S. Department of Interior
EAP	Emergency Action Plan
EIS	Environmental Impact Statement
FERC	Federal Energy Regulatory Commission
FLA	Final License Application for the Box Canyon Hydroelectric Project
FPA	Federal Power Act
RHCA	Riparian Habitat Conservation Areas
INFISH	Inland Native Fish Strategy
MW	megawatts
MWh	megawatt hours
NEPA	National Environmental Policy Act
NVUM	National Visitor Use Monitoring Program
PORTA	Pend Oreille River Tourism Alliance
RM	River Mile
RRMP	Recreation Resources Management Plan
USFS	U.S. Forest Service
USFWS	US Fish and Wildlife Service
SMP	Shoreline Management Plan
Tribe	Kalispel Tribe of Indians
USACE	US Army Corps of Engineers
WDFW	Washington Department of Fish and Wildlife
WSDOT	Washington State Department of Transportation

1 INTRODUCTION

Public Utility District No. 1 of Pend Oreille County (District) owns and operates the Box Canyon Hydroelectric Project (FERC No. 2042) located on the Pend Oreille River in northeastern Washington. The original license was granted for the Box Canyon Hydroelectric Project in 1952, by the Federal Power Commission, now the Federal Energy Regulatory Commission (FERC).

A new License for the Project was issued on July 11, 2005. Under its new License, the Licensee is expected to ensure the ultimate development of recreation resources, consistent with the needs of the area and pursuant to an approved plan (18 CFR, 2.7). Article 412 of the new License, US Forest Service (USFS) Section 4(e) Condition No. 7 and US Department of Interior (DOI) Section 4(e) Condition No. 13 required filing of a recreation plan to manage and develop the project's recreation resources. A Final Recreation Resources Management Plan (RRMP) was filed with FERC on June 22, 2006. However, certain license conditions, including the USFS and DOI recreation conditions were appealed by the District. The agreed terms of a settlement of all appealed conditions were incorporated into a license amendment order issued by FERC on February 19, 2010.

This 2010 Revised RRMP reflects the revised USFS and DOI conditions regarding the District's responsibility for recreation resources on Colville National Forest (CNF) and Kalispel Tribal lands in the Project area. In addition, this revised RRMP includes updates regarding recent and ongoing work and cooperation with agencies, tribes and other organizations to promote recreation and public access in the Project area.

This document is specific to the District's role and does not make management or resource commitments for other agencies, tribes, or other organizations. However, continued active involvement of these other recreation providers in the Project area is important in helping to meet the overall recreation needs of visitors and residents during the term of the new license.

The Revised RRMP consists of 14 sections and several Attachments. Sections 2 and 3 of the RRMP outline a long-term vision of how Project area recreation resources should be managed for the term of the new license, and provides goals and objectives to guide recreation providers in managing, planning, designing, and constructing recreation resources in the Project area. The planning area and planning process are described in Sections 4 and 5. Section 6 defines the anticipated roles and management, planning and coordination responsibilities of recreation resource entities involved in implementation of the RRMP, while Section 7 reviews policies, plans and measures that address public safety at the Box Canyon Hydroelectric Project. Section 8 provides an overview of the process used to identify recreation development and enhancement concepts, while Section 9 outlines RRMP development and enhancement actions implemented to meet the identified recreation needs in the Project area. Section 10 describes the methods the District will use to make coordinated decisions related to implementation of the RRMP and other Project-related resource management plans. Sections 11 and 12 describe the processes for

recreation monitoring and RRMP review and revision. The consultation process conducted during development of the RRMP is summarized in Section 13.

2 PLAN VISION

The RRMP provides a long-term vision of how Project-related recreation resources should be managed in the Project area for the term of the new license. The RRMP vision is provided below as a series of statements and is consistent with results and recommendations produced by the Box Canyon Project relicensing studies:

- Accommodate recreation needs, determined by recreation studies, to extent possible while also recognizing the need to balance competing natural and/or cultural resource protection needs and power generation.
- Maintain and/or improve the recreation experience now enjoyed by area residents and visitors to the Project area by providing and maintaining appropriate recreation facilities and opportunities to address visitor needs for the term of the new license.
- Share responsibility by the District and other recreation providers in the area to help meet the needs of visitors and residents over the term of the new license.
- Commit to a process aimed at balancing various resource needs to achieve the best outcome possible for the region's resources within the terms and conditions of the new license.
- Coordinate Project recreation resource needs with other land and resource management agencies and recreation providers in the Project area.
- Acknowledge that conditions will change over time and that monitoring is an appropriate and necessary strategy to help manage Project-related recreation resources in the future.

3 GOALS AND OBJECTIVES

The primary purpose and overall goal of the RRMP is to comply with the District's obligation under its FERC License for the Box Canyon Hydroelectric Project to promote recreation development and public access consistent with the needs of the area. To satisfy this obligation, the RRMP has established goals and objectives for managing recreation resources. These goals and objectives are intended to guide coordination between the District; federal, state, and local agencies; the Kalispel Tribe (Tribe) and other recreation providers in managing, planning, designing, and constructing recreation resources in the Project area, and in making appropriate resource decisions during the term of the new FERC license. These goals are:

- Help meet existing recreation resource needs in the Project area
- Help meet future recreation resource needs in the Project area
- Provide adequate public access along Project shorelines
- Coordinate recreation planning and needs
- Provide cost-effective and desirable recreation opportunities
- Provide compatible recreation opportunities

These goals and their respective objectives are described below:

Goal 1: Help Meet Existing Recreation Resource Needs in the Project Area

Objectives:

- Provide for the continued safe operation of existing public recreation facilities and use areas in the Project area.
- Provide public and private recreational facilities, use areas, and opportunities within the Project area that respond to visitor facility preferences and needs as identified in visitor surveys conducted during relicensing.
- Improve existing recreation facilities, as needed, by making necessary facility repairs and modifications and/or changes to facility operations and maintenance practices.
- Comply with federal ADA guidelines (ADAAG as amended) and provide for the health and safety needs of all recreation visitors.
- Manage existing Project-related recreation resources in accordance with existing land and resource management plans and policies in the Project area.

Goal 2: Help Meet Future Recreation Resource Needs in the Project Area

Objectives:

- Help provide a diverse spectrum of public recreational facilities, use areas, and opportunities within the Project area that help meet future Project-related recreation needs.

- Monitor future changes in recreation demand and provide for recreation needs, to the extent possible.
- Provide for future changes in recreation preferences, recreation technologies and resulting demands and needs.
- Provide future ADA-related improvements at recreation facilities in the Project area to comply with accessibility regulations and guidelines.

Goal 3: Provide Adequate Public Access Along Project Shorelines

- Provide adequate public access to the Project shorelines, and safe public recreation opportunities on Project lands and waters.
- Allow for public access to appropriate Project lands to help meet the long-term recreation goals and objectives in the Project area and to maintain the existing recreational experience over time.
- Provide signs to inform the public of public access areas and recreation sites.
- Provide adequate informational signs to alert users about operational or natural hazards in and around Project facilities.
- Coordinate with local law enforcement agencies in the Project area.

Goal 4: Coordinate Recreation Planning and Needs

- Monitor recreation resources and visitation and identify appropriate management actions to address identified needs.
- Participate in comprehensive planning efforts that may be undertaken by local agencies in the Project area to coordinate implementation of the RRMP over the term of the new license.
- Coordinate actions with other Project management plans including the Historic Properties Management Plan, Erosion Monitoring, and Erosion Control Protection and Remediation Plans, the Comprehensive Wildlife Management Plan, and the Shoreline Management Plan.

Goal 5: Provide Cost-effective and Desirable Recreation Opportunities

- Promote public recreation facilities and programs that are cost effective.
- Provide public facilities that minimize, to the extent feasible, long-term O&M.
- Provide a range of public recreation opportunities, associated with Project waters and shorelines, which includes developed fee and non-fee sites and undeveloped or dispersed non-fee sites, to allow for a diversity of visitor choice and experience.

Goal 6: Provide Compatible Recreation Opportunities

- Provide recreation facilities and resources that are compatible with other resources in the Project area and meet applicable environmental regulations and resource management plans.

- Focus future recreation development in suitable areas that do not significantly affect the existing recreation experience or sensitive resources.
- Respect property rights and surrounding natural environments while addressing the need for additional recreation facilities and increased recreation use in the Project area over time.
- Provide public recreation facilities that are compatible with the FERC license.

4 PLANNING AREA

The Box Canyon Hydroelectric Project is located in Pend Oreille County in the northeast corner of Washington State near the town of Ione. The Box Canyon Dam is located at river mile (RM) 34.4 from the Pend Oreille River's confluence with the Columbia River. The site is 13 miles from the Canadian border, 14 miles from the Idaho border, and 90 miles north of the city of Spokane. The official Project boundary, as licensed by FERC, encompasses an area along the Pend Oreille River between the main spillway at Box Canyon Dam (RM 34.4) to the base of Albeni Falls Dam, located just over the State of Idaho border in Oldtown, Idaho (RM 90.1), a total length of about 55.7 miles.

The Box Canyon Hydroelectric Project planning area includes the lands and waters within the Project boundary. The Project boundary is identified on Exhibit G maps, which are included in the License Application (District, 2000). Some additional lands were included within the Project boundary, based on requirements in the new FERC License, including the USFS campgrounds; portions of USFS Dispersed sites, the District's Campbell Park and view point, and portions of Oldtown Park, Ione City Park, and Cusick Boat Launch. The boundary, as shown on the Exhibit G maps, consists of a surveyed line, with metes and bounds between Box Canyon and the Town of Ruby. Upstream of Ruby, the project boundary is generally defined by a contour line that corresponds to a water surface elevation of 2041.0 ft MSL as measured at the Cusick gage. This is the upper elevation limit of impact caused by the Project. It corresponds to water levels when river flows are 90,000 cfs (approximate annual flood) and all gates are removed at Box Canyon Dam and the hydroelectric plant is shut down due to lack of hydraulic head. Flows greater than 90,000 cfs may cause river levels higher than El. 2041.0 ft, but any associated impacts are not related to Project operation and are naturally occurring events beyond the Project's control. The Project encompasses a total of approximately 3,377 acres, not counting water surface, which covers another approximated 8,850 acres, at a river flow of 30,000 cfs and at elevation 2030.6 ft at Box Canyon Dam.

The Pend Oreille River in the planning area is used for motorized and non-motorized boating, waterskiing, jetskiing, tubing, fishing and swimming. Along the shores of the river at developed sites and at undeveloped shores and islands, camping, picnicking, swimming, sightseeing, wildlife viewing, sunbathing, waterfowl hunting and big game hunting occur. Located adjacent to the Pend Oreille River, State Highway 31 has been designated as a Scenic Byway based on its scenic, cultural, historic natural, recreational and archaeological qualities. Highway 31, as well as Highway 20 and Highway 2, has been included as part of an International Byway called the Selkirk Loop.

Recreation sites in the planning area are owned and operated by the District, state, county, towns and federal government (USFS), Kalispel Tribe, and private interests. Figure 1 shows the location of recreation sites in the Project planning area. Table 1 provides information regarding recreation facilities. All facilities are in good condition.

Public Utility District No. 1 of Pend Oreille County

BOX CANYON HYDROELECTRIC PROJECT

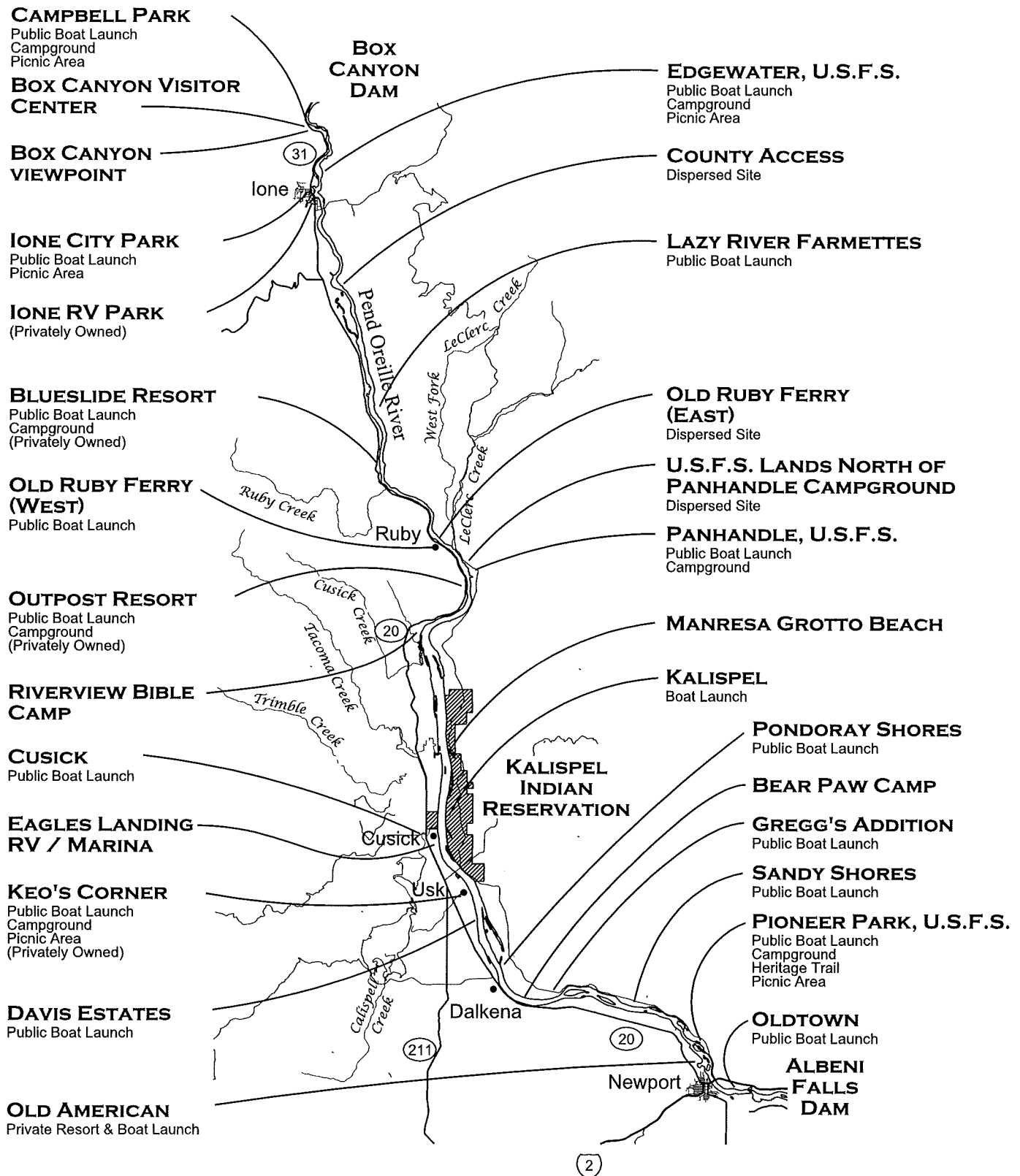


FIGURE 1
RECREATION STUDY
AREA MAP

TABLE 1. EXISTING FACILITIES/ACTIVITIES AT RECREATION SITES

Recreation Site	Camping Facilities	Day-Use Swimming/Sunbathing	Day-Use Picnic Facilities	Day-Use Trails	Boating Facilities	Interpretation Facilities
Campbell Park & Box Canyon Visitor Center	8 campsites, 10 BBQ pits, vault toilets, water.	Swimming pond with dock at site.	Several picnic tables in grassy area around pond. Play area. Several parking spaces (Approx. 11+) near pond and at Visitor Center.	No	Paved boat ramp to river below Box Canyon Dam. Several parking spaces (approx. 4 Vehicle/trailer spaces) available near Visitor Center.	Available at Box Canyon Visitor Center adjacent to Campbell Park.
Box Canyon Viewpoint	No	No	One picnic table and new benches. Minimal parking area, but visitors generally do not stay long.	No	No	New interpretive signs.
WDFW Old Ruby Ferry (west shore) Boat Launch	No	No	No	No	Concrete boat ramp, paved parking area (approx. 6 vehicle/trailer spaces) and vault toilets.	No
County Access Picnic Area/Beach	No	Sandy beach at river shore.	One picnic table and BBQ pit in overgrown area. Site and road overgrown and no designated parking area (room for approx. 3+ cars).	No	No boat ramp. Boats can pull up to shore.	No
Lazy River Farmettes Boat Launch	No	No designated area, but people could swim off shore.	No	No	Paved boat ramp, seasonal porta-pottie, and small grassy area to park cars (approx. 3 vehicle/trailers).	No
Davis Estates Boat Launch	No	No designated area, but people could swim off shore.	No	No	Rustic gravel boat ramp, grass/dirt area to park cars (approx. 4 vehicle/trailers).	No
Pondoray Shores Boat Launch	No	No	No	No	Gravel boat ramp and small grass/dirt area to park cars (approx. 3 vehicle/trailers).	No
Gregg's Addition Boat Launch	No	No	No	No	New concrete boat ramp, dock and parking area (approx. 10 vehicle/trailers).	No
Sandy Shores Estates Boat Launch	No	No designated area, but people could swim off shore.	No	No	Concrete boat ramp and dirt/grass area to park cars (approx. 5 vehicle/trailers).	No

TABLE 1. EXISTING FACILITIES/ACTIVITIES AT RECREATION SITES

Recreation Site	Camping Facilities	Day-Use Swimming/Sunbathing	Day-Use Picnic Facilities	Day-Use Trails	Boating Facilities	Interpretation Facilities
Ione City Park	No	Swimming at sandy beach near new boat launch/dock. New dock on river.	Several picnic areas on lawn and covered picnic area. Children's playground equipment. Restrooms, water. (approx. 15+ spaces).	No	New concrete boat launch and dock. Parking near day-use facilities (est. 5 spaces for Vehicle/trailers)	Interpretive sign
Cusick Boat Launch	No	People swim and fish from dock. (Approx. 16 day-use parking spaces).	New picnic tables, shelter and grass area, basketball/skate Park, sport fields.	Well- maintained interpretive river walking path.	New facility with concrete boat ramp, dock and large paved parking area (approx. 12 vehicle/trailer spaces) and restrooms.	Interpretive sign
Oldtown Boat Launch	No designated	People swim and sunbathe off dock.	New covered area near river.	No	New dock and concrete boat ramp. New large paved parking area (approximately 30 vehicle and trailer spaces)	Visitor center and interpretive displays
Edgewater Campground/ Boat Launch/ Picnic Area	20 campsites with BBQs. Vault toilets, water	Steep bank, except at boat launch.	5 picnic sites with tables and BBQs. 6 day-use parking sites	Pedestrian trails throughout site.	Concrete boat ramp with parking area (approx. 7 vehicle/trailer and day-use parking spaces).	Interpretive signs.
USFS Panhandle Campground/ Boat Launch/ Picnic Area	12 campsites with BBQs. Vault toilets, water	Sandy areas on shoreline.	1 picnic site. Large grass area. 6 day-use parking spaces.	Pedestrian trails throughout site.	Concrete boat ramp with parking area (approx. 6 vehicles/trailers).	Interpretive signs
USFS Pioneer Park Campground/ Boat Launch/ Picnic Area	16 campsites with BBQs, vault toilets, water.	Beach access to sandy areas on shoreline.	3 picnic sites with BBQs. Large picnic shelter. 14 day-use parking spaces	Heritage Interpretive Trail and pedestrian trails throughout site.	Concrete boat launch and parking area (approx. 16 vehicle/trailers).	Interpretive Trail and displays.
USFS Old Ruby Ferry Landing (east shore) – dispersed recreation site	No	Sandy areas on shoreline.	No	No	Old gravel ferry landing at times used by boats. Adjacent small areas where currently vehicles & trailers park (approx. 4 vehicle/trailers maximum)	No
USFS Dispersed Site North of Panhandle Campground	No	Gravel road parallel to LeClerc Road provides parking for approx. 5 + vehicles.	No	Rugged trail to shoreline	No	No

TABLE 1. EXISTING FACILITIES/ACTIVITIES AT RECREATION SITES

Recreation Site	Camping Facilities	Day-Use Swimming/Sunbathing	Day-Use Picnic Facilities	Day-Use Trails	Boating Facilities	Interpretation Facilities
Manresa Grotto Beach	No	Sandy area on shoreline. Swimming dock.	Picnic tables near beach, fire pit, play equipment. Porta-pottie at times. Limited Parking (approx. 3 cars).	No	No	No
Kalispel Boat Launch	No	No	No	No	Concrete boat launch, gravel area to park vehicles and trailers (approx. 8 vehicle/trailers)	No
Ione RV Park	18 RV sites. Showers/ restrooms, hook-ups. Motel.	Dock on river.	No	No	Dock on River. Ione city Park boat launch adjacent to RV Park.	No
Blueslide Resort	49 RV sites - hookups, showers/ restrooms. 9 Cabins.	Swimming pool at resort and swimming on shore of River.	Play equipment, meeting hall.	No	Marina: Concrete boat ramp and dock + Fuel sold at dock. (Est. 6 vehicle/trailer parking space).	No
Outpost Resort	10 RV sites, 12 Tent sites, showers/ restrooms, cabins.	Swimming off dock and along shore of River.	Picnic tables near café.	No	Marina: Concrete boat ramp and dock. Boat rentals, bait (Est. 5 vehicle/trailer parking space).	No
Eagles Landing	23 RV lots open to public	No	No	No	Marina – 40 slips open to public	No
Keo's Corner	3 camp/ picnic sites, vault toilets.	Swimming on shore of River.	3 picnic/campsites. 10+ parking spaces.	No	Boat launch on inlet w/cement slabs and launch at dirt river shore (Est. 7 vehicle/trailer parking spaces).	No

TABLE 1. EXISTING FACILITIES/ACTIVITIES AT RECREATION SITES

Recreation Site	Camping Facilities	Day-Use Swimming/ Sunbathing	Day-Use Picnic Facilities	Day-Use Trails	Boating Facilities	Interpretation Facilities
Bear Paw Camp	14 cabins, 2 dorms, bunk houses	Pool & Swimming on shore of River.	Picnic, sports courts	No	Boat dock.	No
Riverview Bible Camp	30 large cabins, lodges, RV and tent camping	Pool & Swimming on shore of River.	Picnic, sports courts, paintball course, etc.	No	Concrete boat ramp and dock.	No
Old American Campground	90 RV/ campsites. Hookups, showers/ restrooms.	Swimming on shore of River.	Playground, picnic area, spa/hot tub, horse shoes	No	Concrete boat ramp and dock.	No

5 PLANNING PROCESS

The process of obtaining a new license for the Box Canyon Hydroelectric Project (referred to as “relicensing”) began in 1996. Early in the relicensing process, recreation study plans were developed to include recreation studies and information needs for the ultimate development of a RRMP. Specific study plans, scopes of work and/or forms were developed for field surveys and observations, telephone surveys, mail surveys and analysis of recreation demands and needs. Numerous draft and final reports resulted from these plans and scopes of works. Agency, Tribe, and public involvement were an integral part of the planning process.

Throughout these efforts numerous telephone conversations and meetings were held with agencies and the Tribe. Draft study plans and reports were distributed to agencies and the Tribe, and comments were incorporated into final study plans and reports. Section E5.10 of the Final License Application (FLA) provides a summary of consultation regarding recreational resources (District, 2000).

Following completion of the FLA, additional surveys were conducted of Kalispel Tribal members, including draft and final reports, in consultation with the Tribe. Additional recreation monitoring at the District’s Campbell Park and USFS’s Edgewater, Panhandle and Pioneer Park sites were conducted in 2000 and 2001. Further consultation with agencies and the Tribe continued, with FERC additional information requests (District, 2001a), and through the NEPA process, including scoping and comments on the draft and final EIS (FERC, 2004b). The results of these efforts were incorporated into the FERC License for the Box Canyon Hydroelectric Project (FERC, 2005).

A Final RRMP was filed with FERC in June 2006 and included actions resulting from years of study and consultation regarding recreation use and needs in the Box Canyon Project area. This 2010 Revised RRMP includes changes due to the 2009 Settlement Agreement (revised USFS and DOI conditions) and resulting February 2010 License Amendment, and provides updates on recent and ongoing recreation enhancements and monitoring efforts. The process of developing the 2010 Revised RRMP included USFS and Tribe review of a draft revised RRMP and a meeting, with the results incorporated into the final 2010 Revised RRMP that addresses recreation and public access in the Project area.

6 RECREATION MANAGEMENT, PLANNING AND COORDINATION

Lands, facilities and recreational interests within the Box Canyon Project area include a number of entities. The District owns only about 2.5 percent of the lands within the project boundary. The majority of Project lands (approximately 75 percent) are privately owned and approximately 12.5 percent are owned by the Kalispel Tribe. Around 6 percent of Project lands are owned by the federal government and administered by the USFS. Pend Oreille County owns 3 percent and the states of Washington and Idaho own less than 1 percent of the Project lands. The U.S. Bonneville Power Administration (BPA), U.S. Army Corps of Engineers (USACE), U.S. Fish and Wildlife Service (USFWS), Washington Department of Fish and Wildlife (WDFW) and Bureau of Land Management (BLM) also own land within the Project boundary. The towns of Ione, Cusick and Oldtown (Idaho) also own recreation facilities and associated lands along the Project shorelines. The properties and management responsibilities of land owners/managers are generally detailed in a series of deeds, agreements and land management plans.

Anticipated roles and management, planning and coordination responsibilities of the land owners and recreation resource providers involved in implementation of the RRMP are described below.

District Roles/Responsibilities

- District has a responsibility under its federal license for the Box Canyon Project to ensure that opportunities are provided for the public to safely access and use Project lands and waters consistent with Project operations.
- District is ultimately responsible for ensuring that actions outlined in the RRMP, and in its FERC license are properly carried out.
- District is responsible for operation and maintenance of Campbell Park, Box Canyon Dam Visitor Center, and its Viewpoint site.
- District is responsible for reporting to FERC (via the FERC Form 80) every six years.
- District is responsible for review and updating of the RRMP and for conducting associated recreation monitoring in conjunction with the FERC Form 80 schedule.
- District is responsible for coordinating recreation studies, needs and Project actions with recreation agencies.
- District is responsible for coordination of proposed actions with other Project-related resources plans.
- District is responsible for coordinating periodic and annual meetings, as needed, with the Recreation Subcommittee and Technical Committee.
- District is responsible for completing improvements at Gregg's Addition Boat Launch, as outlined in the Project license and RRMP. District will be responsible for maintenance of District-owned property associated with the Gregg's Addition Boat Launch.
- District is responsible for funding signs at boat launches addressing invasive species and road signs identifying public recreation facilities and boat launches as outlined in the Project license and RRMP.

- District is responsible for providing funding assistance to the City of Oldtown, Town of Cusick, City of Ione, USFS, and Kalispel Tribe as outlined in the RRMP. It is not the intent of the District to own, manage, or operate other recreation providers' lands or facilities.

Kalispel Tribe Roles/Responsibilities

- Kalispel Tribe will provide input on RRMP development, review and updates as well as Project area recreation study plans and study reports.
- Kalispel representatives will participate in Recreation Subcommittee and Technical Committee meetings.
- Kalispel Tribe will be responsible for actions on Kalispel lands, including recreation improvements, operation and maintenance, and associated permits and approvals consistent with the Project's Shoreline Management Plan and other Project-related resource management plans.

US Forest Service Roles/Responsibilities

- Forest Service will provide input on RRMP development, review and updates, as well as Project area recreation study plans and study reports.
- Forest Service representatives will participate in Recreation Subcommittee and Technical Committee meetings.
- Forest Service will continue to share and provide recreation visitation records, and results from USFS National Visitor Use Monitoring Project for the purpose of monitoring recreation use in the Project area.
- Forest Service will be responsible for actions on Forest Service lands, including recreation enhancements, operation and maintenance, and associated permits and approvals consistent with the Project's Shoreline Management Plan and other Project-related resource management plans.

Other Federal and State Agencies Roles/Responsibilities

- Provide input on RRMP development, review and updates as well as Project area recreation study plans and study reports.
- Agency representatives may participate in Recreation Subcommittee and Technical Committee meetings.
- Other Federal and state agencies that own Project lands will be responsible for actions on their lands, including improvements, operation and maintenance, and associated permits and approvals consistent with the Project's Shoreline Management Plan and other Project-related resource management plans.

Pend Oreille County Roles/Responsibilities

- Pend Oreille County will provide input on RRMP development, review and updates as well as Project area recreation study plans and study reports.

- Pend Oreille County representatives will participate in Recreation Subcommittee and Technical Committee meetings.
- Pend Oreille County will generally be responsible for actions on their lands, including improvements, operation and maintenance, and associated permits and approvals consistent with the Project's Shoreline Management Plan and other Project-related resource management plans.

Pend Oreille County Sheriff's Office Roles/Responsibilities

- May provide input on RRMP development, review and updates as well as Project area recreation study plans and study reports.
- May participate in Recreation Subcommittee and Technical Committee meetings.
- Provides routine surveillance of public lands in the Project area.

Cities of Ione, Cusick, and Oldtown Roles/Responsibilities

- Will provide input on RRMP development, review and updates as well as Project area recreation study plans and study reports.
- May participate in Recreation Subcommittee and Technical Committee meetings.
- Will be responsible for actions on their lands, including recreation improvements, operation and maintenance, and associated permits and approvals consistent with the Project's Shoreline Management Plan and other Project-related resource management plans.

Private Recreation Providers Roles/Responsibilities

- May provide input on RRMP development, review and updates as well as Project area recreation study plans and study reports.
- May participate in Recreation Subcommittee and Technical Committee meetings.
- Will continue to share and provide recreation use data based on fee receipts for the purpose of monitoring recreation use in the Project area.
- Will be responsible for actions on their lands, including recreation improvements, operation and maintenance, and associated permits and approvals consistent with the Project's Shoreline Management Plan and other Project-related resource management plans.

7 PUBLIC SAFETY

Under Section 10(c) of the FPA, FERC is authorized to regulate projects for the health and safety of the public. FERC's Division of Dam Safety and Inspections (DDSI) is charged with that responsibility and the program is administered through five regional offices. Primary concerns of the DDSI are hazards created by project structures and operations and the potential for injury or accident at FERC licensed projects. Hazards created by natural conditions in project waters and at recreational areas that are operated or leased by licensees are equally important.

Implementation of safety measures to minimize accidents that are not associated with project structures or operations is usually the responsibility of local entities and law enforcement agencies.

To address concerns for safety at projects, the DDSI requires routine annual inspections and reporting. Dam safety inspections are also required every 5 years, to be conducted by an independent inspector (18 CFR 12.32). Specific safety measures are determined by the Regional Engineer (Regional Director) on a case-by-case basis. The Portland, Oregon Regional office has responsibility for the Box Canyon Project. Specific safety measures implemented for the Box Canyon Hydroelectric Project are described below.

The District maintains a comprehensive public safety program to ensure the structural adequacy of Box Canyon Dam and the safety of members of the public who may use the Project area. Box Canyon Dam is inspected annually by District staff and representatives of the FERC. Independent consultants thoroughly examine the spillway and water retaining structures once every five years and publish a comprehensive Safety Inspection Report.

The District maintains a current Emergency Action Plan (EAP) for the extremely remote possibility that a structural emergency would arise at the project, and safety measures are conducted as required by FERC. This plan is designed to minimize danger to people and property downstream of Box Canyon Dam. The EAP, developed in accordance with FERC regulations, provides guidelines for notification and early warning of local, state and federal agencies, emergency services staff, and the public in the event of an actual or potential failure. The Box Canyon Dam is different from many other projects in that as flows increase, the gates of the dam are removed until at high flows the river flows freely, almost as if the dam were not in place. Recently, the Project dam was reclassified by FERC as a "Low Hazard" facility due to the very low risk of downstream damage in the event of a dam failure.

Box Canyon Dam is staffed by station operators 24 hours per day. The operators continually monitor operation of the Project. River flows and water elevations above and below the dam are continuously monitored in the power plant control room. A communication link is available 24 hours per day with District management staff in Newport, Washington and with operating staff at the USACE Albeni Falls Dam upstream and Seattle City Light's Boundary Dam (FERC No. 2144) downstream.

The District has installed a variety of public safety devices in the Project area. Improved warning signs and a boater safety net were installed in 1983 at the upstream end of Box Canyon,

approximately one mile upstream of the spillway. The safety net is operational under all weather conditions except when ice is forming on the river surface. It provides a secure tie-off point for any boats that may be adrift and grab ropes for swimmers who may be in the water. Warning signs on each side of the river state, “DANGER - BOX CANYON DAM SPILLWAY 1 MILE DOWNSTREAM - NO BOATS BEYOND THIS POINT.” Similar signs are located at three locations upstream of the safety net. Warning signs are also located downstream of the spillway to warn boaters and river users of sudden changes in flow from the spillway or power plant.

Fencing is installed around the power plant, switchyard, and spillway to limit public access to potentially dangerous areas of the Project.

More detailed descriptions of the safety measures instituted by the District are provided in the District’s Public Safety Program, which is regularly updated. Copies are maintained at the Dam and at the District office in Newport, Washington.

8 CONCEPT DEVELOPMENT

8.1 Recreation Development and Enhancement

Consultation efforts regarding recreation development and enhancement concepts in the Project area were initiated in 1996 and continued through study planning, implementation, and reporting. Proposed recreation protection, mitigation and enhancement (PME) measures were developed based on recreation needs identified through recreation monitoring, surveys, review of existing resource management plans and recreation planning documents; and analysis of recreation capacity and needs in the Project area.

A preliminary list of PME measures was provided in the Draft License Application (DLA) for the Box Canyon Hydroelectric Project (District, 1999b), Recreation Resources Report (Exhibit 5.0). Comments received on the Draft Recreation Resources Report resulted in an updated preliminary list of recreation PME measures that was provided in the Final License Application (FLA) for the Box Canyon Hydroelectric Project (District, 2000) and Final Recreation Resources Report (Exhibit 5.0). A final list of recreation PME measures were summarized in the District's Response to FERC's Additional Information Request (District, 2001a).

Through the NEPA process, and development of the EIS for the Project (FERC, 2004b), FERC staff evaluated the District-proposed enhancement measures and recommendations from resource agencies and other interested parties. FERC recommended all of the District enhancement options, except for funding recreation improvements for the North Pend Oreille Scenic Byways Program. Funding for the North Pend Oreille Scenic Byways Program was not considered to be Project related. Based on agency comments and recommendations, FERC staff recommended additional measures, as outlined in the Final EIS (FERC, 2004b). The DOI and USFS provided 4(e) Conditions, which also requested several measures, described in the EIS.

In 2005, the Commission issued a new license for the continued operation of the Box Canyon Project No. 2042. Certain license articles and mandatory conditions were appealed by the District, including some provisions of the Forest Services' 4(e) Conditions relating to recreation. Subsequent settlement negotiations with the interested agencies and the Tribe resulted in a Joint Application for Approval of Settlement Agreement and Application for Amendment of New License for the Box Canyon Project No. 2042 being filed with FERC on March 24, 2009. A FERC Order accepting the Settlement Agreement and amending the License was issued on February 19, 2010. The relicensing process, studies, ongoing consultation with agencies, tribes and other organizations, and settlement agreement resulted in the recreation development and enhancement actions, outlined below.

8.2 FERC License and Section 4(e) Actions

Requirements under Article 412 of the License and Section 4(e) Conditions, as revised under the Settlement Agreement and License Amendment (February, 2010) are provided below.

License Article 412

- Deed or grant an easement to the town of Oldtown for a 1.8-acre parcel of licensee-owned land, located adjacent to the town of Oldtown's existing park for the development of RV camping. Continue annual funding of Oldtown Park.
- Continue funding for the town of Cusick's Boat Launch, and town of Ione's City Park.
- Develop boat launch on the east side of the Pend Oreille River.
- Fund signs at all public boat launches addressing Eurasian Milfoil and the importance of cleaning off milfoil from watercraft.
- Continue operation and maintenance of Campbell Park, the visitor center, and the scenic overlook located in the vicinity of the Box Canyon dam.
- Provide three new picnic tables at Campbell Park.
- Fund signs on highways 31 and 20 and LeClerc Road identifying location of currently unsigned public recreation facilities and boat launches.
- Provide provisions for monitoring recreation use in Project area to ensure that existing facilities are meeting public recreation needs.
- Prepare monitoring reports and revised plan.

DOI Revised 4(e) Condition No. 13

- Following dismissal of petitions and complaints by the Court of Appeals, the District shall make one-time payment to the Kalispel Tribe of Indians of \$300,000 for the Tribe to use for construction or improvement of the Pow Wow Grounds, Kalispel Boat Launch, and Manresa Grotto Beach.
- District shall make annual payments of \$30,000 to the Kalispel Tribe of Indians to fund daily operation and maintenance of any or all of the facilities identified above.
- District shall make annual payments of \$10,000 to the Kalispel Tribe of Indians to fund major maintenance of any or all of the facilities identified above.
- The amounts specified in paragraphs, above, shall be as of the year 2007, subject to adjustment based on CPI (see Settlement Agreement).

USFS Revised 4(e) Condition No. 7

- Within one year of license issuance, the Licensee shall develop a Recreation Resource Management Plan (RRMP) which includes National Forest System lands and facilities within or adjacent to the Project. The RRMP shall be developed in consultation with and approved by the USDA Forest Service and filed with the Commission. The Licensee

shall implement the RRMP and update it every six years in conjunction with filing the Commission's Form 80.

- The RRMP shall include an annual implementation schedule, consultation and approval procedures, and shall require the Licensee to complete the following activities:
 1. Within six years of license issuance, provide for the rehabilitation of disturbed areas between County Road 9325 and the reservoir while leaving pull-off parking for at least 5 vehicles at the old Ruby Ferry Landing area (T35N, R44E, Section 19) and the area north and adjacent to the Panhandle Campground (T35N, R44E, Sections 20 and 29).
 2. Within one year of license issuance, the Licensee shall, through annual payments, contribute to the cost of operating, maintaining and replacing existing overnight, day use, and heritage facilities at Edgewater, Panhandle and Pioneer Park. The Licensee shall provide \$80,000 annually to the USDA Forest Service, adjusted for inflation, for the term of the new license and any annual licenses. Contributions shall be made through a collection agreement as outlined in USDA Forest Service License Condition No. 2. Funds provided by the Licensee will be made available to the USDA Forest Service by the beginning of the federal fiscal year (October 1) and remain available to the USDA Forest Service until expended. Adjustments for inflation will be calculated annually from the base period of 2007 to the time of payment and will be based on the Consumer Price Index (CPI-U) for the previous year (see Settlement Agreement).
 3. The Licensee shall provide for future Project-related recreation needs and demands on National Forest System lands as follows:
 - a. Within one year of license issuance, develop and implement a monitoring program for evaluating recreation use at National Forest facilities, recreation user preferences and trends within the Project area. This monitoring program will incorporate results from USDA Forest Service annual site visitation records and the National Visitor Use Monitoring Project (NVUM) (found at www.fs.fed.us/recreation).
 - b. Provide for management strategies, facilities, and/or programs, as determined by the USDA Forest Service, to address impacts to National Forest System lands when monitoring required by 3(a) shows that average use levels over a 3-year period at any individual National Forest facility listed in Section 2 above exceed 40 % of the capacity during the managed Season of Use and 90% of the capacity during the Peak Use period (weekends during the July 1 to Labor Day period and intense-use holidays).
- All capital improvements and activities on National Forest System lands are subject to site specific planning in accordance with USDA Forest Service License Condition No. 2.

9 RECREATION PLAN AND IMPLEMENTATION SCHEDULE

Recreation studies conducted throughout the relicensing process identified public recreation development and enhancement needs within the Box Canyon Hydroelectric Project area. The following describes details of the recreation development and enhancement actions that have or will be implemented as part of this revised RRMP, and provides estimated costs and schedules for these actions. The recreation development and enhancement actions are consistent with recreation study results, stated goals and objectives of the RRMP and Article 412 of the FERC License and revised DOI and USFS 4(e) Conditions.

9.1 Oldtown Boat Launch (Oldtown Riverside Park)

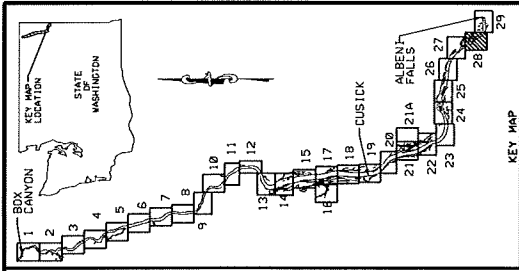
Over the last several years the District has participated in funding site improvements to Oldtown Boat Launch. In late 2000, the District purchased 1.8 acres of undeveloped land adjacent to the Pend Oreille River in Bonner County, Idaho for \$75,000. This property is adjacent to City of Oldtown-owned property that is currently occupied by a boat launch, dock and recently improved parking area, picnic shelter and visitor center. The land purchased by the District was recently transferred to the City of Oldtown and Rotary for development of a water supply well and park expansion, including RV camping. The location of the Oldtown Riverside Park is shown on Figure 1 in Section 4, above. A site plan of Oldtown Boat Launch (Oldtown Riverside Park) showing proposed improvements and the property transferred to Oldtown is shown on Figure 2.

As required under Article 202 of the Box Canyon Hydroelectric Project License, the land previously owned by the District and transferred to the City of Oldtown has been included within the Box Canyon Project boundary (Figure 3).

Improvements to the Oldtown Riverside Park site are ongoing, with completion dependent on funding. The District contributed \$40,000 within the first year following issuance of the License and contributes an additional \$10,000 annually for continued development and future operation and maintenance of Oldtown Riverside Park. The City of Oldtown and Rotary have agreed to mutually be responsible for construction, operation and maintenance of the Park.

9.2 Cusick Boat Launch

The location of the Cusick Boat Launch is shown on Figure 1. The District participated in funding of the Cusick Boat Launch facility, including a dock, restrooms, parking and pathways, which were completed in 1997 (Figure 4). The District also contributed \$37,000 following issuance of the License, and contributes an additional \$5,000 annually, for improvements to the town of Cusick's boat launch site. The town of Cusick is responsible for implementing all improvements and operation and maintenance of the site. The Cusick Boat Launch with the location of the Project boundary is shown on Figure 5.

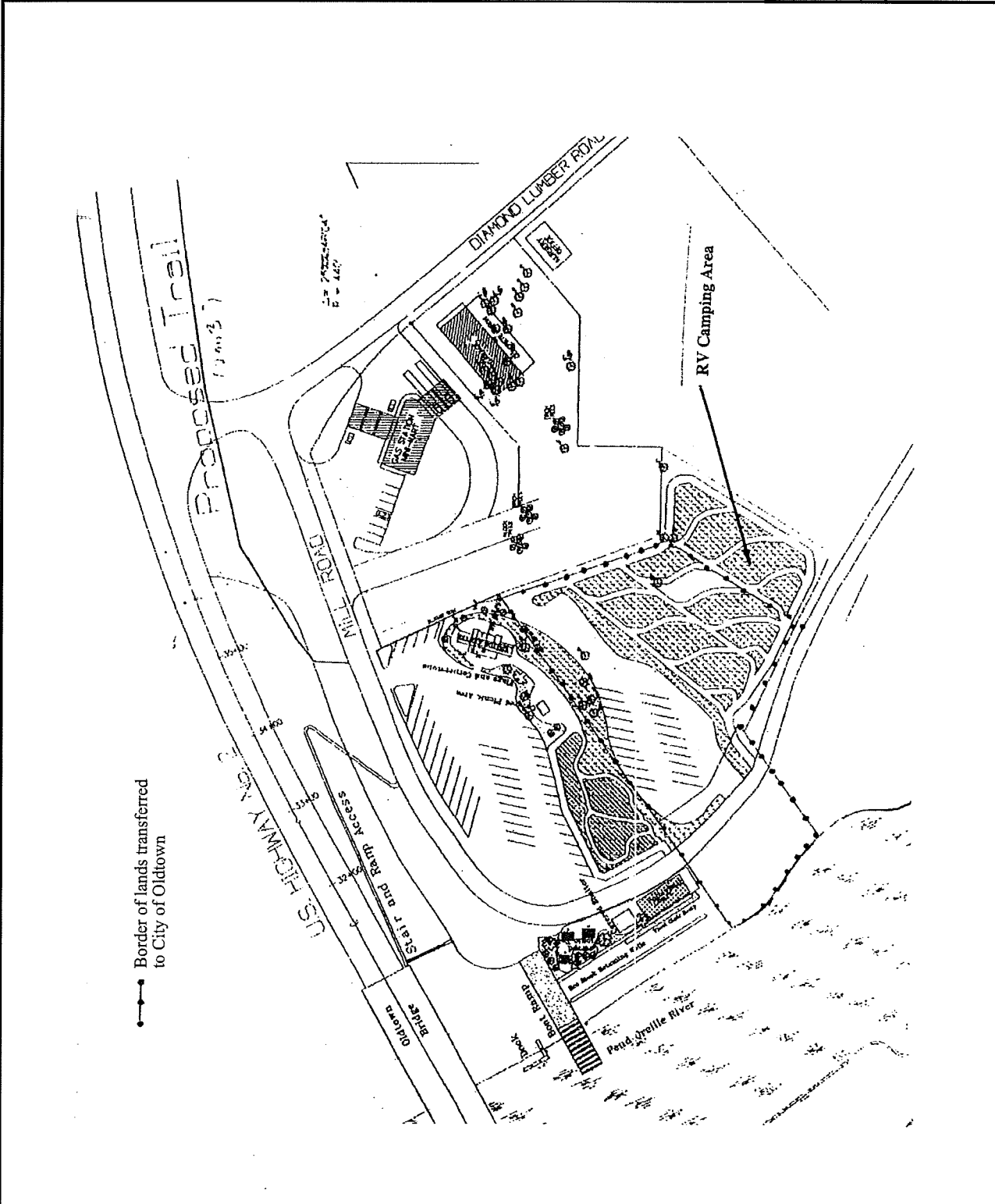


Notes:

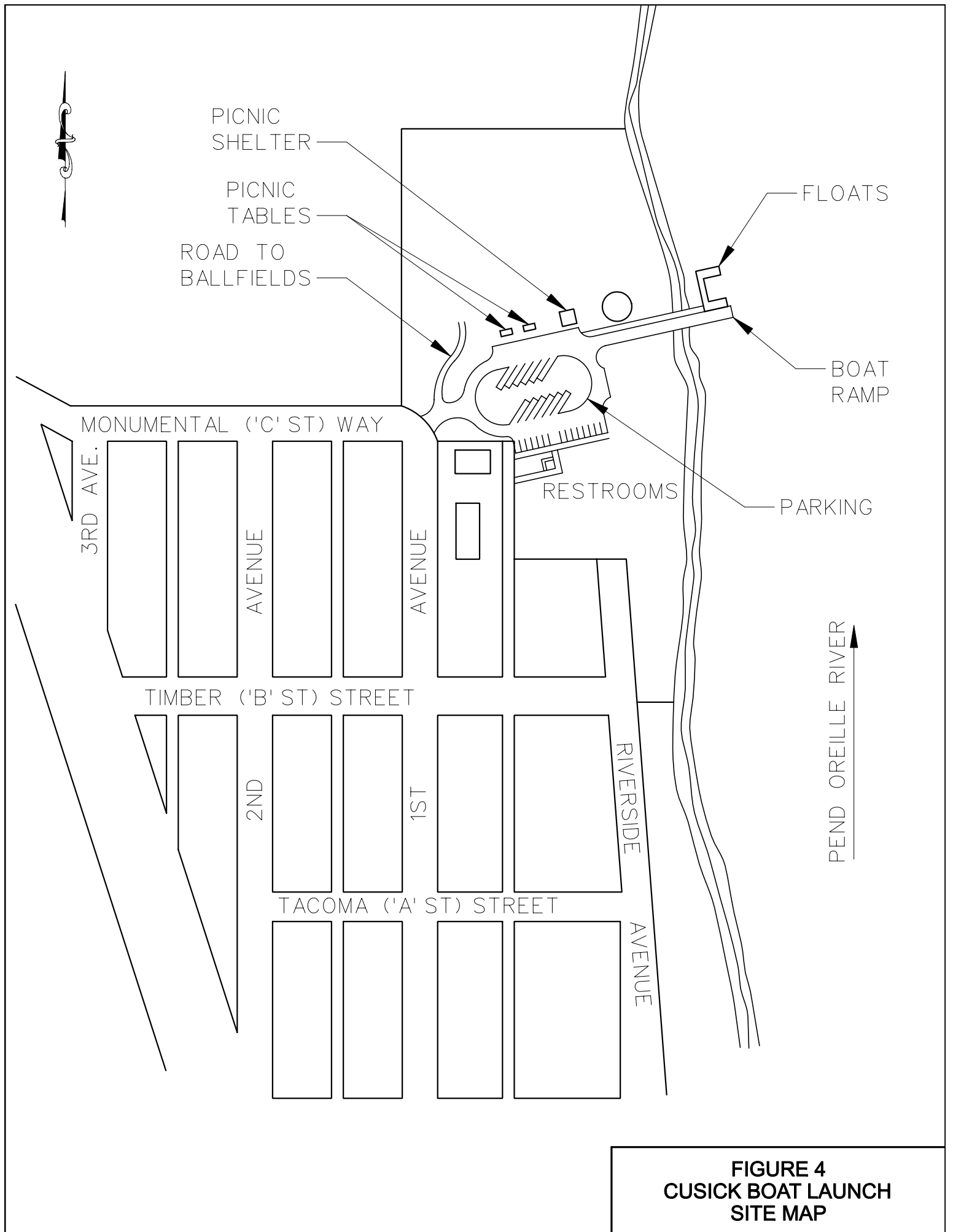
1. This is a conceptual plan only, as of June 2001.
2. RV Camping area shown is currently part of the plan, but could be changed later to allow other types of activity.

**FIGURE 2
OLDTOWN RIVERSIDE PARK
BOAT LAUNCH SITE PLAN**

BOX CANYON POWER PROJECT
PUBLIC UTILITY DISTRICT NO. 1
PEND OREILLE COUNTY NEWPORT, WASHINGTON







T33N, R44E, Section 30

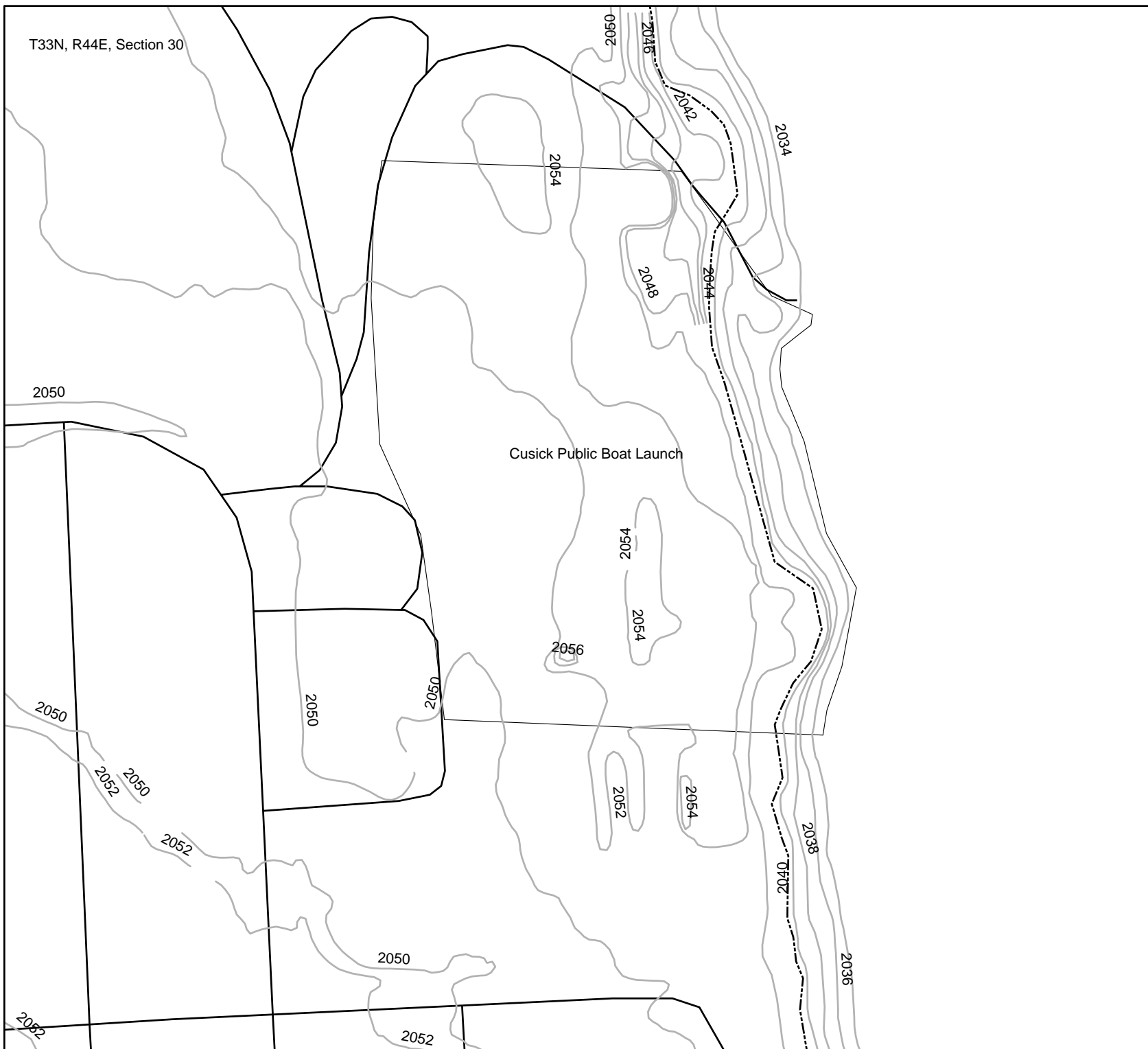


Legend

- 2-foot Contours
- Roads
- - - Project Boundary

0 25 50 100 Feet

FIGURE 5
CUSICK BOAT LAUNCH
WITH PROJECT BOUNDARY



9.3 East Side Boat Launch

The Gregg's Addition primitive boat launch site, located on the east side of the Pend Oreille River, was selected for further development. The location of this site is shown on Figure 1.

The existing Gregg's Addition county public access parcel included a gravel road running down to a concrete boat launch. Because limited space was available at this county public access parcel for parking or other amenities, the District acquired additional property above the boat launch parcel and began the process of obtaining permits for the site work. Construction of facilities was initiated in 2008. Figure 6 shows the Gregg's Addition site and improvements.

The District provided a new dock and ramp for boating and swimming activities at the boat launch. Figure 7 shows the boat launch, and new dock and ramp at the site.

On the newly acquired property above the county public access parcel, the District is in the process of completing the car/trailer parking area, and a vault toilet has been installed at the parking area site (Figure 8). The District will also be installing picnic tables and landscaping in the near future (see Figures 6). One marked handicap parking space and a handicap accessible picnic table will also be provided at the site.

A new sign was installed at the south side of the entrance near the parking area (Figure 9), and a sign addressing invasive species was installed at the boat launch. Signs will also be posted at the entrance to the site stating:

12-HOUR PARKING
VIOLATORS WILL BE TOWED AWAY
AT VEHICLE OWNER'S EXPENSE

Development of the Gregg's Addition boat launch cost around \$100,000. The District is responsible for the operation and maintenance of the new facilities on District-owned lands.

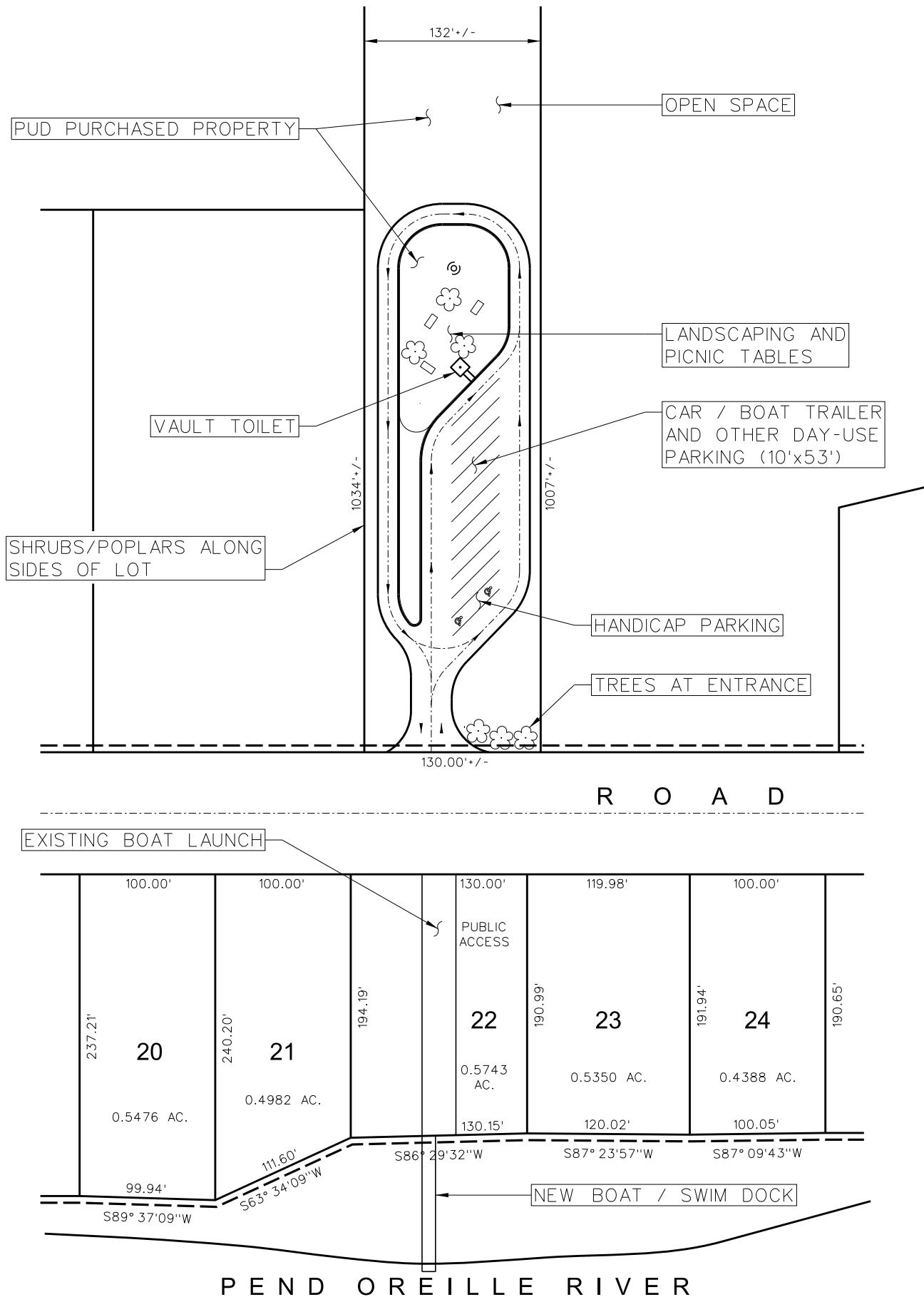


FIGURE 6
GREGG'S ADDITION
BOAT LAUNCH IMPROVEMENTS



FIGURE 7. GREGG'S ADDITION BOAT LAUNCH, DOCK AND RAMP



FIGURE 8. GREGG'S ADDITION SITE - VAULT TOILET & PARKING AREA



FIGURE 9. GREGG'S ADDITION - SIGN ON SOUTH SIDE OF ENTRANCE

9.4 District's Campbell Park, Visitor Center and Viewpoint

The District will continue to operate and maintain Campbell Park, Box Canyon Dam Visitor Center and the Box Canyon Viewpoint. The District's Campbell Park, Visitor Center and Viewpoint are shown in Figure 1. Annual cost for operation and maintenance of these sites is around \$100,000. Figure 10 shows Campbell Park and Visitor Center from the Box Canyon Viewpoint. Figure 11 shows the new benches and one of the new interpretive signs at the Box Canyon Viewpoint site.

The District installed three additional picnic tables at Campbell Park to meet needs identified during visitor surveys at the site. The three additional tables cost approximately \$1,500. Tables were purchased, and placed on the large grassy area near the swimming pond.

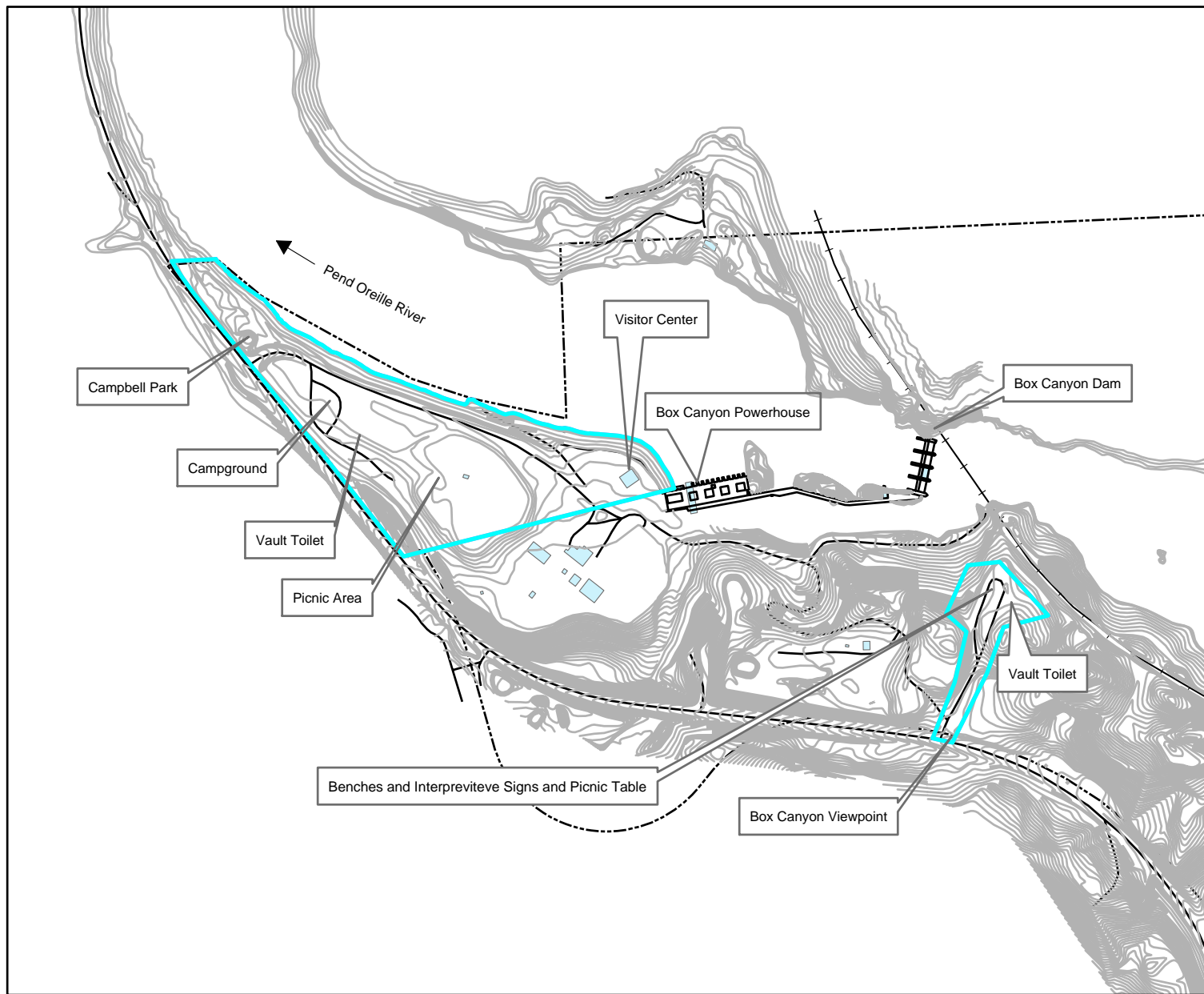
As required under Article 202 of the Project License, Campbell Park has been included within the Project boundary (Figure 12).



FIGURE 10: CAMPBELL PARK AND BOX CANYON VISITOR CENTER



FIGURE 11. BOX CANYON VIEWPOINT



Legend

- Roads
- + Railroad
- 2-foot Contours
- - - Project Boundary

0 150 300 600 Feet

FIGURE 12
CAMPBELL PARK
BOX CANYON VISITORS CENTER &
BOX CANYON VIEWPOINT
SITE MAP WITH PROJECT BOUNDARY

9.5 Ione City Park

Ione City Park is located on the east side of the Pend Oreille River, just upstream of Box Canyon Dam (refer to Figure 1). The District participated in funding of a new boat launch and dock at Ione City Park, over ten years ago (Figure 13). The District continues to contribute \$5,000 annually for operation and maintenance of the Ione City Park. Ione City Park is owned, operated and maintained by the Town of Ione. The Town of Ione is responsible for operation and maintenance activities at the Park. The park site and project boundary is shown on Figure 14.

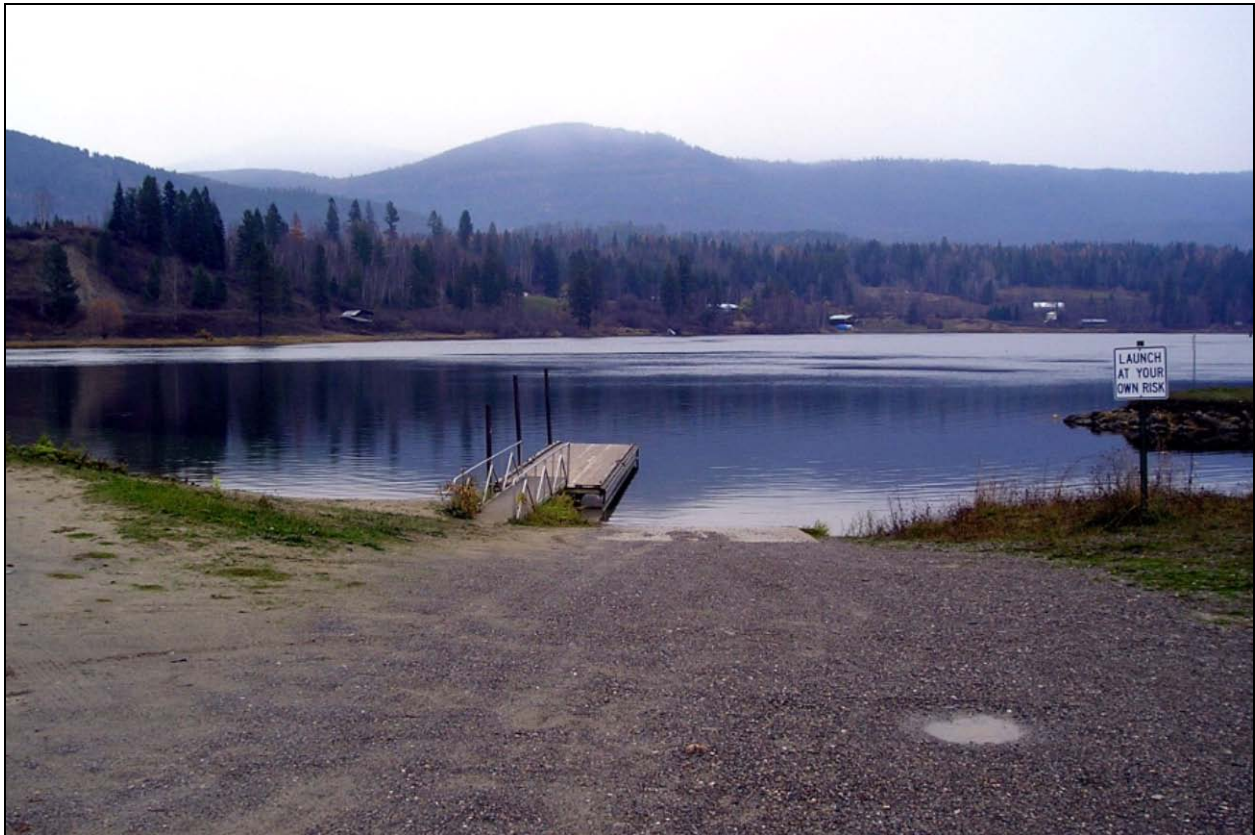
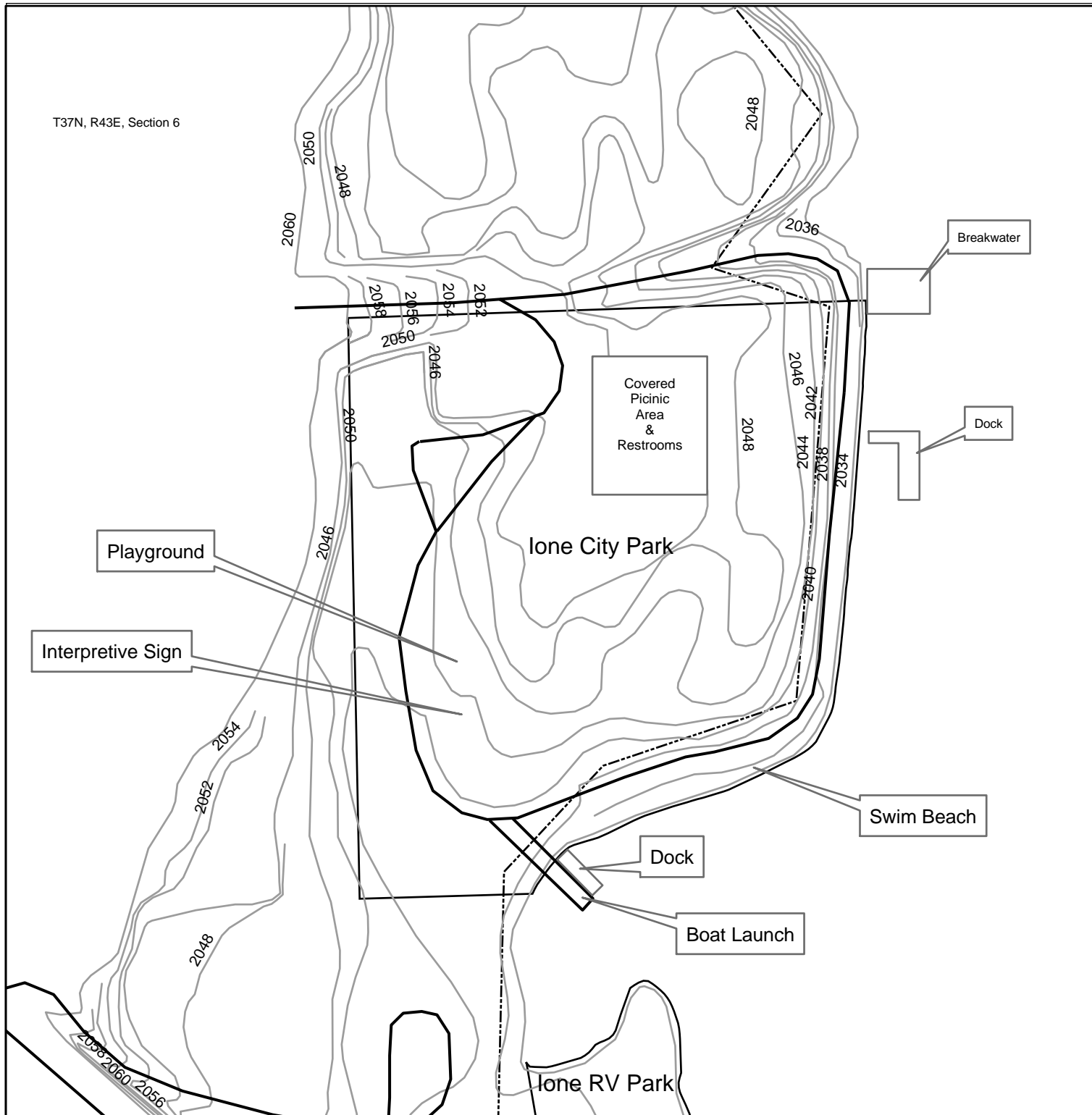


FIGURE 13. IONE CITY PARK BOAT LAUNCH

T37N, R43E, Section 6



Legend

- 2-foot Contours
- Roads
- - - Project Boundary

0 37.5 75 150 Feet

FIGURE 14
LONE CITY PARK SITE MAP
WITH PROJECT BOUNDARY

9.6 Highway and Road Signs

The District is currently working with the Pend Oreille Recreation and Tourism Alliance (PORTA) and Pend Oreille River water trails organizers in providing signs on Highways 31 and 20 and LeClerc Road, which will identify the locations of public recreation facilities, boat launches and planned water trails.

Currently, 11 of the 28 developed and dispersed recreation sites identified on Figure 1 need road signs. Road signs identifying recreation facilities are needed along Highway 20 for the Cusick Boat Launch; Keo's Corner boat launch, campground and picnic site; Eagles Landing, and Davis Estates Boat Launch. Signs are needed along LeClerc Road for the County's public picnic area/beach, Lazy River Farmettes Boat Launch, Old Ruby Ferry site, Kalispel Boat Launch, Pondoray Shores Boat Launch, and Sandy Shores Boat Launch. A sign is also needed along Highway 2 showing the location of Oldtown Boat Launch. A sign along LeClerc Road showing the location of the Kalispel Tribe's Manresa Grotto Beach does not exist; however, no signs are proposed for this site because the Tribe does not want public access to this site.

There are numerous Pend Oreille County designated public parcels within subdivisions along the Pend Oreille River that do not have road signs showing their locations. Signs posting the location of Pend Oreille County designated public recreation parcels that are appropriate for public use, such as the County's public picnic area/beach, are included in the list of signs to be funded by the District. However, initiating public attention to all of the numerous County public parcels, via signs, may not be appropriate and could create problems for the residents of the subdivisions, especially when no facilities currently exist at the sites and parking at the sites could intrude upon adjacent private properties. Review of these parcels in the future for public boating and non-boating day-use facilities should be conducted if further needs are identified during future updates of the RRMP.

Examples of County and Highway road signs that may be used to show the location of public boat launches and public shores are shown in Attachment 1. These signs conform to Pend Oreille County standards and Washington Department of Transportation (WSDOT) specifications (Attachment 2). Pend Oreille County and WSDOT will fabricate and install these signs; the District will fund these efforts. Estimated costs for fabrication and installation of signs at recreation sites are \$8,000. The signs will be purchased and installed following agreements with PORTA, Pend Oreille River water trails organizers, WSDOT, Pend Oreille County and the District.

9.7 Eurasion Milfoil Signs

The District has funded the installation of signs for public boat launches addressing the importance of reducing the spread of invasive species by removing weeds from boats and trailers. The WDFW provided signs regarding invasive species (example shown in Attachment 3). These signs have been distributed to the owners of the boat launches (i.e. county, private

resort owners, USFS, Kalispel Tribe) for installation at the boat launch sites. Cost for shipping and installation of these signs at public boat launches was around \$5,000.

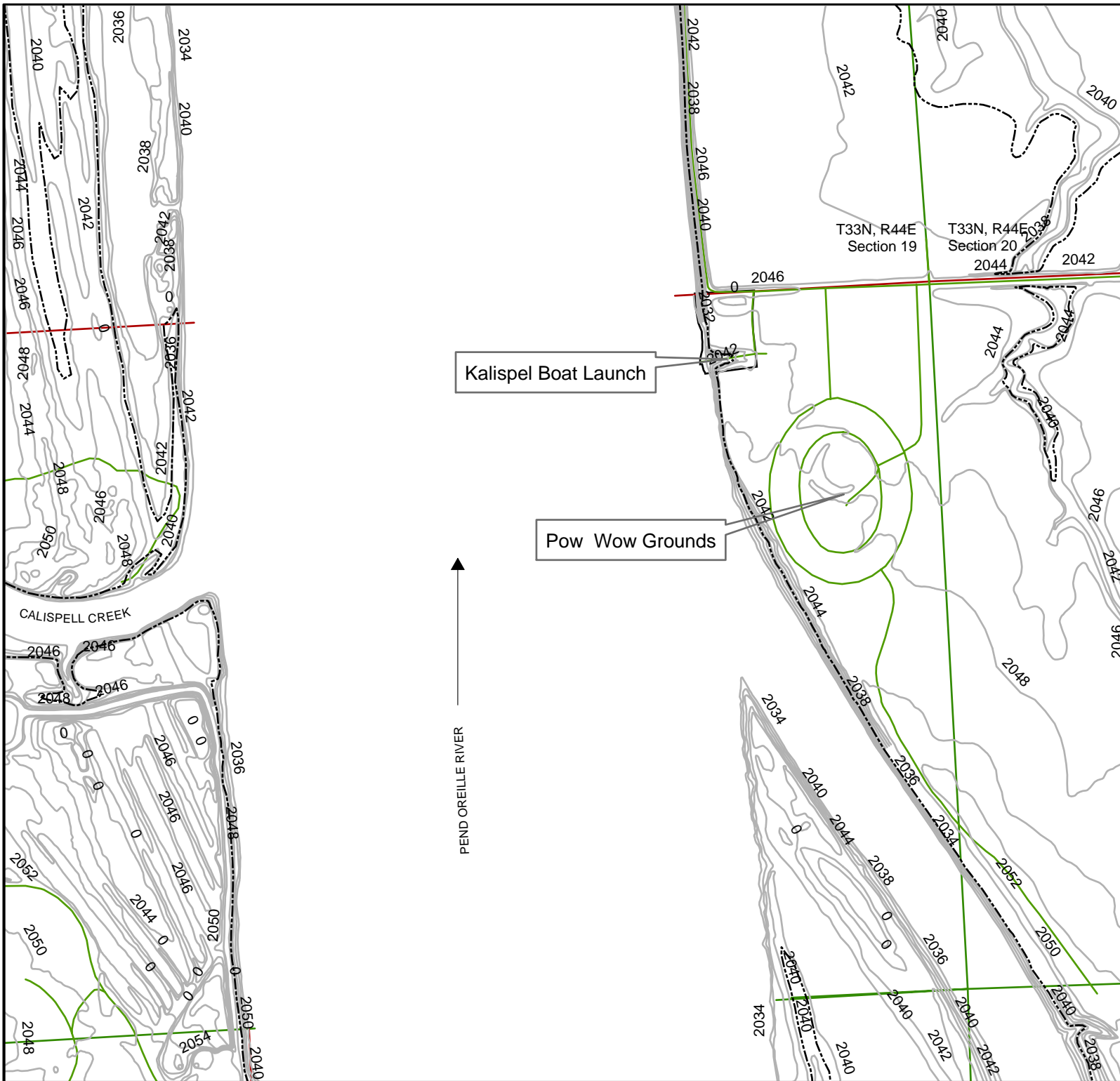
9.8 Department of Interior Modified 4(E) Condition No. 13

As described in DOI's Revised 4(e) Condition No. 13, the District will provide funding of Kalispel Tribe Recreation facilities for construction or improvement of recreation facilities, including the Pow Wow Grounds, the Kalispel Boat Launch, and Manresa Grotto Beach (refer to Section 8.2). The location of the Kalispel Reservation is shown on Figure 1. The Tribe's recreation sites, in relation to the Project boundary, are shown on Figures 15 and 16.

The District made a one-time payment of \$300,000 in May 2010 to the Kalispel Tribe of Indians for construction or improvements of their recreation facilities. The District will continue to provide annual payments of \$30,000 to the Kalispel Tribe to fund daily operation and maintenance of recreation facilities, and \$10,000 to fund major maintenance of recreation facilities.

As requested under DOI's Revised 4(e) Condition No. 13, all amounts shown in the above paragraph, and specified under the Settlement Agreement, will be adjusted at the time of payment to current dollars using the consumer Price Index All Urban Consumers, CPI-U base period 1982-84=100, using the 2007 average index of 201.60 as the denominator and the most recent available monthly index as the numerator (refer to Appendix E of Settlement Agreement, 2010).

The Tribe will be responsible for any facility development work, capital improvements, and operation and maintenance activities, including obtaining any necessary permits or approvals that may be needed for construction, improvements or maintenance of recreation facilities on Tribal lands.



- Legend**
- Township-Range Lines
 - Roads
 - Section Lines
 - 2-foot Contours
 - Project Boundary

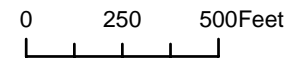


FIGURE 15
KALISPEL BOAT LAUNCH/
POW WOW GROUNDS SITE MAP
WITH PROJECT BOUNDARY

9.9 US Forest Service Revised 4(e) Condition No. 7

9.9.1 Recreation Resources Management Plan

The FERC License for the Box Canyon Hydroelectric Project was issued July 2005, and a Final RRMP was filed with FERC in June 2006. This Revised RRMP includes updates based on the February 2010 License amendment order and provides for future Project-related recreation needs and demands on USFS lands based on the development and implementation of a monitoring program to evaluate recreation use at USFS facilities. The District will review the RRMP and update it, as needed, every six years in conjunction with filing the Monitoring/FERC Form 80 Report.

A recreation monitoring program was developed in 2006 and implemented. The monitoring program included an evaluation of recreation use and trends at USFS facilities, as well as other Project area recreation sites. USFS facilities include the developed Edgewater, Panhandle and Pioneer Park campgrounds, and the two USFS dispersed sites - the Old Ruby Ferry site and lands north of Panhandle campground (refer to Figure 1 for location of the USFS campgrounds and dispersed sites).

The monitoring program was developed in coordination with the USFS and other relevant agencies and recreation organizations and the Tribe. It included initial development and approval of draft and final study plans prior to initiating the monitoring efforts. Recreation monitoring was conducted in 2008 and included an inventory of recreation facilities, on-site observational counts, collection of fee receipt data and USFS visitor register data. USFS annual site visitation records were collected for the years 2006, 2007, and 2008 and used to provide average use levels at USFS sites over a 3-year period. The results from the National Visitor Use Monitoring Project (NVUM) was not yet available, but will be available and included in the next Monitoring/Form 80/report.

The Final 2008 Recreation Resources Monitoring and FERC Form 80 Report was filed with FERC in March 2009 (available at FERC eLibrary and at the District [PUD] office). The Report includes a review of facility capacity, and recreation demands and needs based on the monitoring efforts. The results of the monitoring program indicated that no additional facilities are needed at recreation sites in the study area. However, based on USFS Condition 7.3.b criteria (see section 8.2), Pioneer Park exceeds the USFS capacity criteria, which triggers the need to address impacts. In contrast, Edgewater Campground and Panhandle Campground are underutilized.

During a meeting on July 21, 2010, the District and USFS representatives reviewed options to address the capacity issue at Pioneer Park. Based on this meeting and USFS letter dated August 13, 2010, the following actions will be implemented:

- The District, in coordination with the Pend Oreille River Tourism Alliance (PORTA), will help develop and fund the production of a brochure for general distribution. The brochure will provide information regarding campgrounds and associated amenities in

the Box Canyon Project area and/or links to campground web sites. The brochure and associated information can provide visitors with other campground options available in the area.

- USFS should inform the USFS Pioneer Park campground hosts to route visitors to other underutilized campgrounds including:
 - USFS Panhandle Campground (approx. 28 miles from Pioneer Park)
 - USFS Edgewater Campground. (approx. 48 miles from Pioneer Park)
 - Diamond Lake Campground (approx. 14 miles from Pioneer Park)
 - Planned RV campground at Oldtown Riverside Park (approx. 2.7 miles from Pioneer Park)
- The District will meet with the USFS over the next several years to address potential issues or concerns.

9.9.2 USFS Campgrounds

The District will contribute annual payments of \$80,000 (adjusted for inflation) for the cost of operating, maintaining and replacing existing overnight, day use, and heritage facilities at the USFS Edgewater, Panhandle and Pioneer Park campgrounds. Adjustments for inflation will be calculated annually from the base period of 2007 to the time of payment and will be based on the Consumer Price Index (CPI-U) for the previous year (refer to Appendix E of Settlement Agreement, 2010).

The District will contribute funds to the USFS, while the USFS will be responsible for operation and maintenance activities, including any associated permits or approvals necessary to complete those activities, at the USFS campgrounds. Figures 17, 18 and 19 show the Edgewater, Panhandle and Pioneer Park sites and the location of the Project boundary, which was revised under Article 202 of the Box Canyon Project License.

9.9.3 Rehabilitation of USFS Dispersed Areas

USFS Section 4(e) Condition No. 7 requires the District to provide for the rehabilitation of disturbed areas between County Road 9325 and the reservoir while leaving pull-off parking for at least 5 vehicles at:

- The old Ruby Ferry Landing site (T35N, R44E, Section 19)
- The area north and adjacent to Panhandle Campground (T35N, R44E, Sections 20 & 29).

In 2009, the District completed the rehabilitation at the old Ruby Ferry Landing area and the area north and adjacent to Panhandle Campground. The rehabilitation was conducted to conform with the Forest Plan, as amended by the Inland Native Fish Strategy (INFISH). As required under the current (amended) Forest Plan, riparian habitat conservation areas (RHCSs) were established for the protection of riparian functions, which included a 150-foot buffer from the edge of the maximum pool elevation. Vehicular traffic within the 150-foot zone was eliminated, while dispersed access was allowed at the sites.

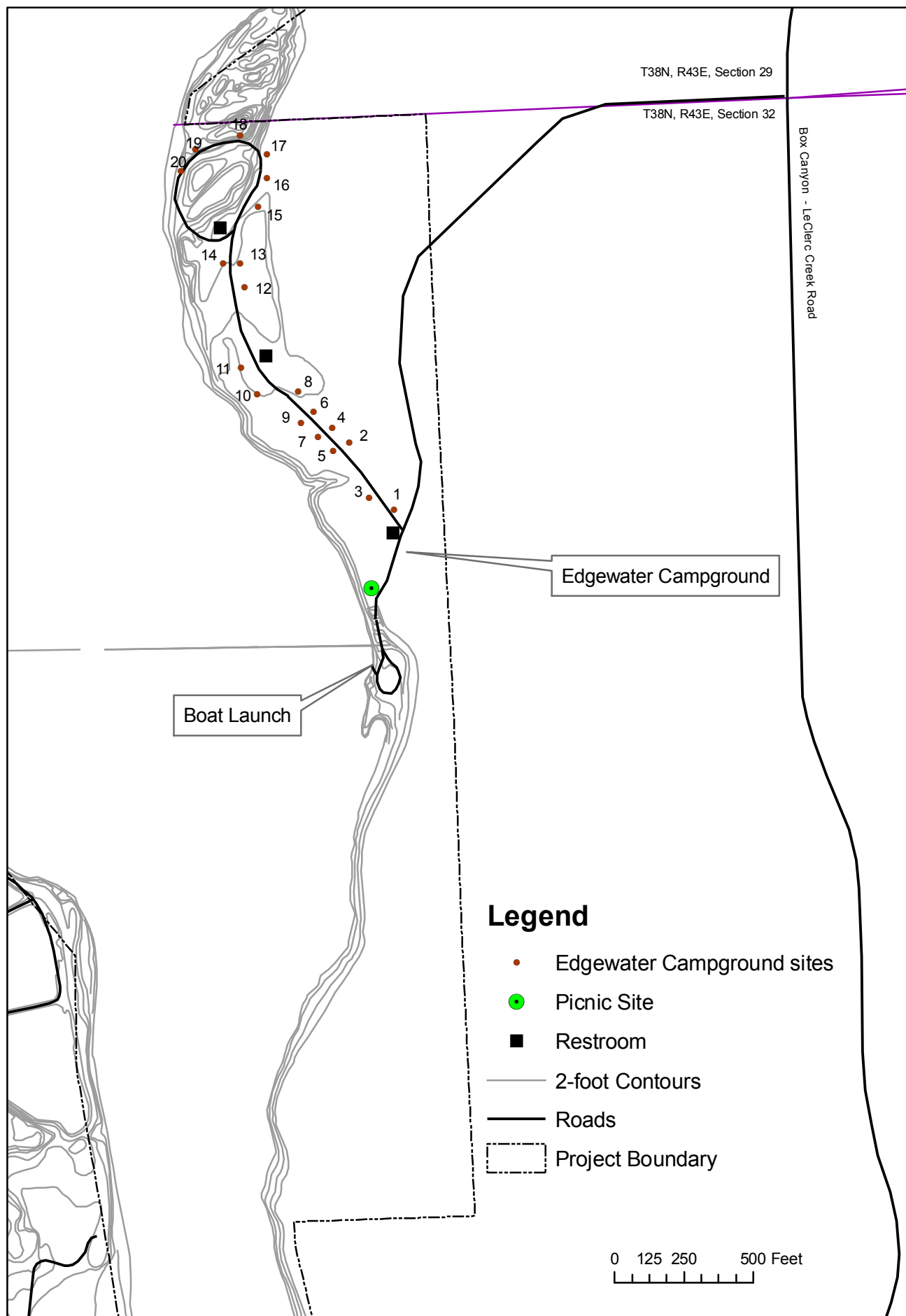
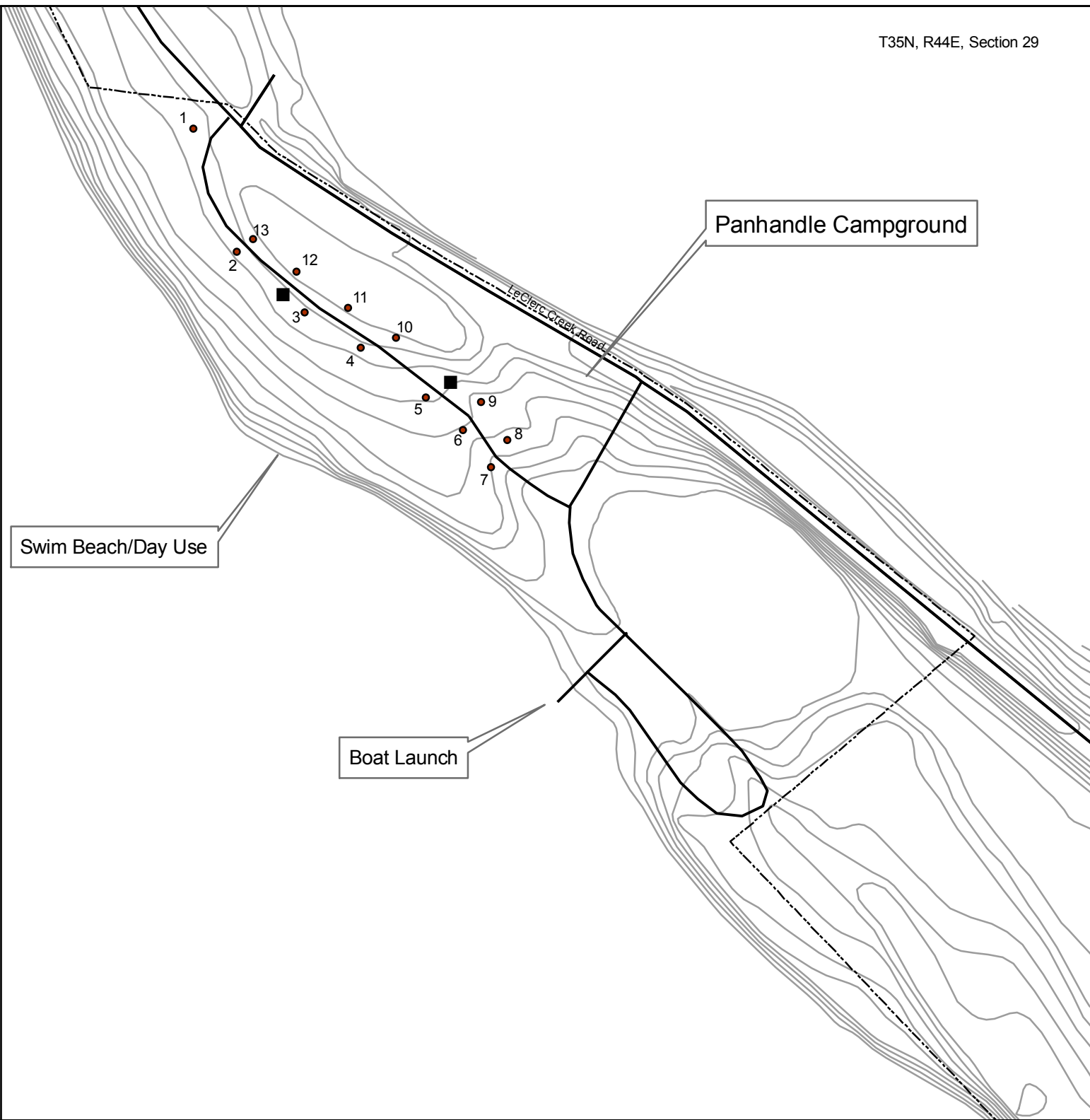


FIGURE 17
EDGEWATER CAMPGROUND AND BOAT LAUNCH
WITH PROJECT BOUNDARY

T35N, R44E, Section 29



Panhandle Campground

Swim Beach/Day Use

Boat Launch

LeClerc Creek Road

Legend

- Panhandle Campground sites
- ▭ Project Boundary
- Restroom
- Roads
- 2-foot Contours

0 100 200 400Feet

FIGURE 18
PANHANDLE CAMPGROUND
AND BOAT LAUNCH
WITH PROJECT BOUNDARY

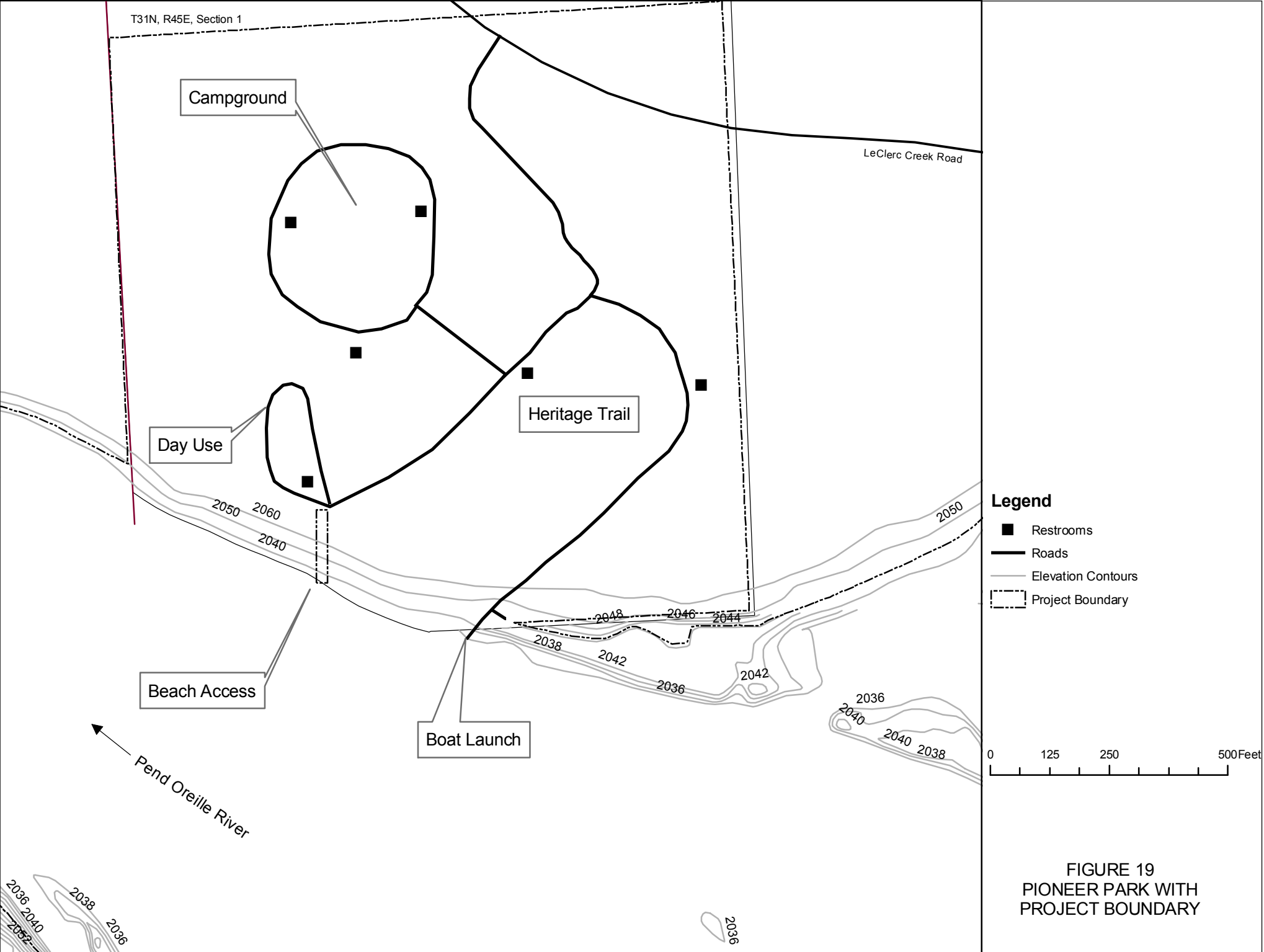


FIGURE 19
PIONEER PARK WITH
PROJECT BOUNDARY

Old Ruby Ferry Landing

The USFS Old Ruby Ferry site and Project boundary are shown on Figure 20 (refer to Figure 1 for location). Previously, motorized access from LeClerc Road to the shoreline occurred at the Old Ruby Ferry Landing and at another access road, east of the Ruby Ferry Landing site (Figure 20). Significant vegetation disturbance along the shoreline had occurred from vehicle access and parking along the shoreline.

To prevent motorized vehicle parking near the shoreline at the Ruby Ferry Landing site, a pullout/parking area was constructed adjacent to LeClerc Road to allow for parking of four to five vehicles (Figures 21, 22 and 23). This pull-out/parking area is over 150 feet from the maximum pool elevation of the shoreline. Boulders were placed across the old gravel road, near the new parking area, to prevent vehicle access to the shoreline (Figure 24). Below the new parking area, half of the width of the old landing/access road was scarified and a foot path was created on the other half to allow for pedestrian access to the shoreline (Figure 24).

Boulders were also placed at the entrance of the East Access Road to prevent motorized vehicle access to the shoreline at this location (see Figures 20 and 25). Rehabilitation efforts are nearly completed and include reseeding and revegetation of disturbed areas with native species.

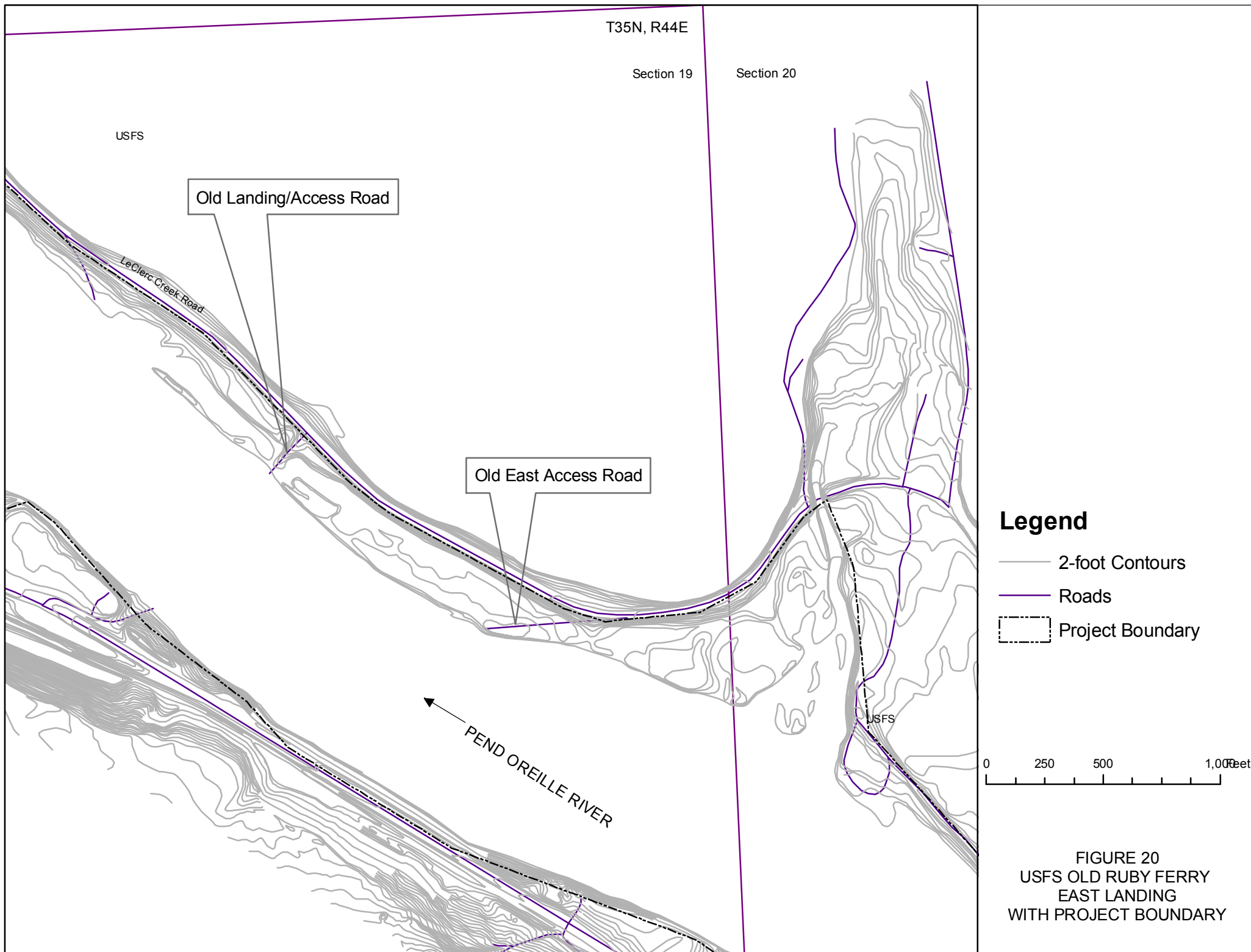
The District costs for the rehabilitation of the USFS Ruby Ferry site including the East Access Road was around \$20,000.

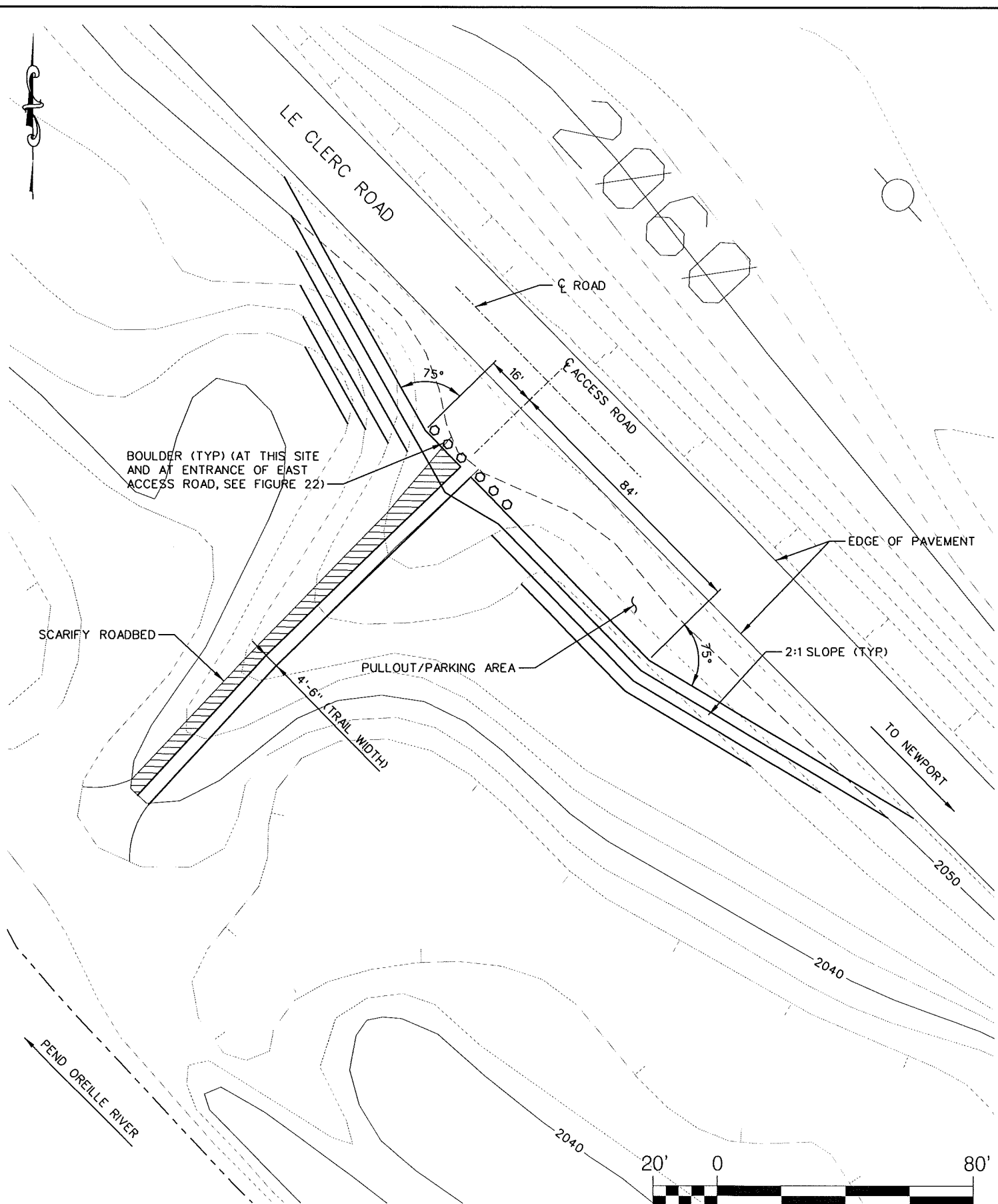
USFS Lands North of Panhandle Campground

The USFS property north, and adjacent to, Panhandle Campground is shown on Figure 26. An existing gravel road provides access to the site off of LeClerc Road (County Road 9325). This gravel road is parallel to LeClerc Road (Figures 27 and 28), and additional dirt roads extended towards the river and along the bench above the shoreline and to the shoreline.

In order to conform with INFISH and amended Forest Plan requirements, vehicle access to the shoreline could not continue at this site. Vehicle parking for five or more vehicles exists along the gravel road that runs parallel to LeClerc Road (Figure 27). This area is well over 150 feet from the maximum pool elevation of the shoreline. To prevent vehicle access near the shoreline, boulders were placed near the parking area (Figure 29).

Estimated cost of the District's work was around \$10,000.





PLAN

SCALE: 1" = 40'-0"

SCALE: 1" = 40'

EES Consulting

570 KIRKLAND WAY, SUITE 200 KIRKLAND, WA 98033
PH. 425.889.2700

FIGURE 21
USFS OLD RUBY FERRY
LANDING SITE TOPOGRAPHY,
BARRIER AND PARKING



FIGURE 22. AERIAL PHOTO OF RUBY FERRY LANDING SITE



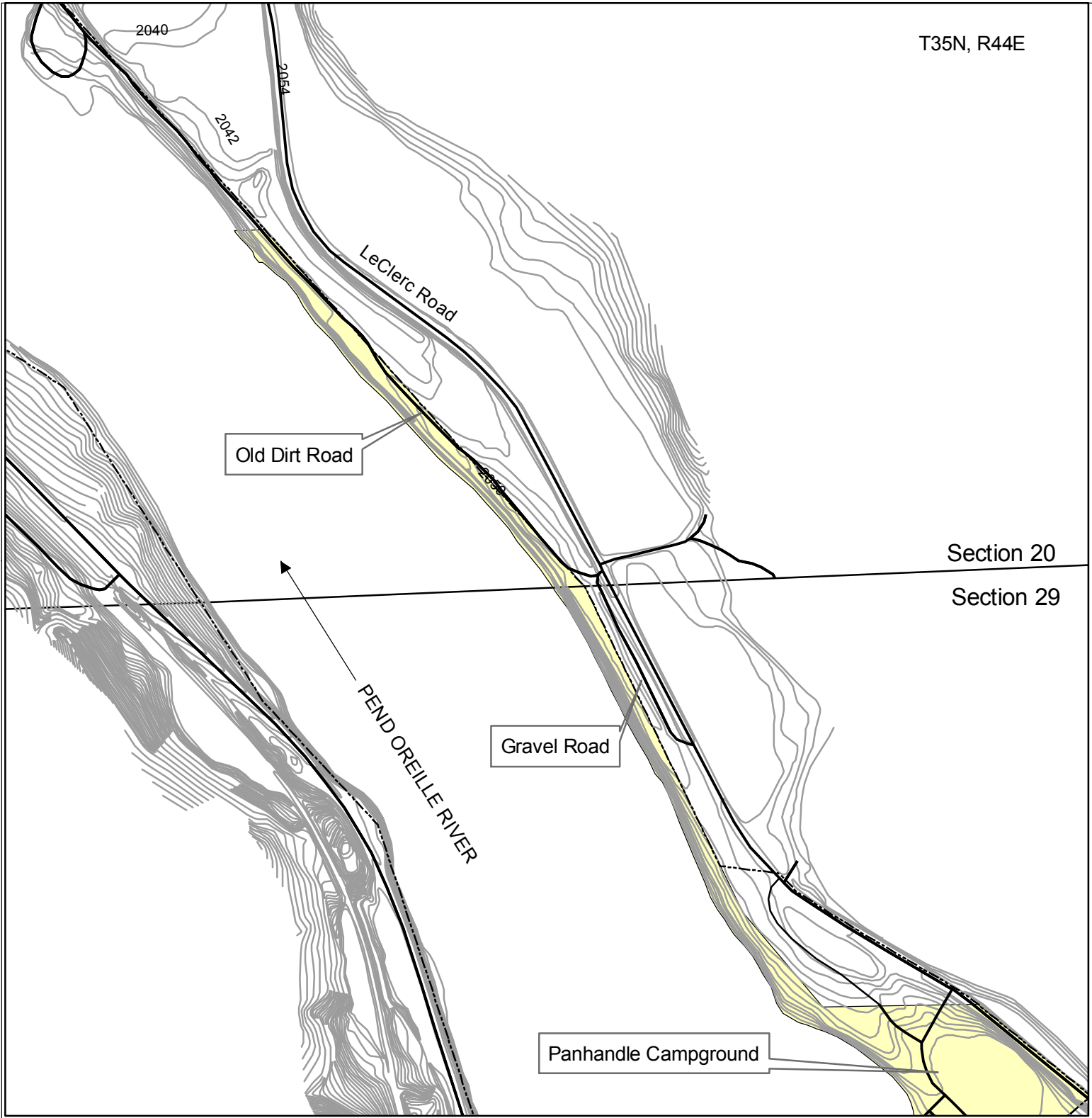
FIGURE 23. OLD RUBY FERRY LANDING SITE PULLOUT/PARKING AREA



FIGURE 24. USFS OLD RUBY FERRY LANDING BOULDERS TO PREVENT VEHICLE ACCESS AND FOOT PATH



FIGURE 25. BOULDERS TO PREVENT VEHICLE ACCESS AT ENTRANCE TO OLD EAST ACCESS ROAD



- Legend**
- Roads
 - 2-foot Contours
 - Forest Service
 - Project Boundary

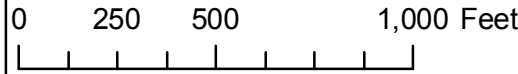
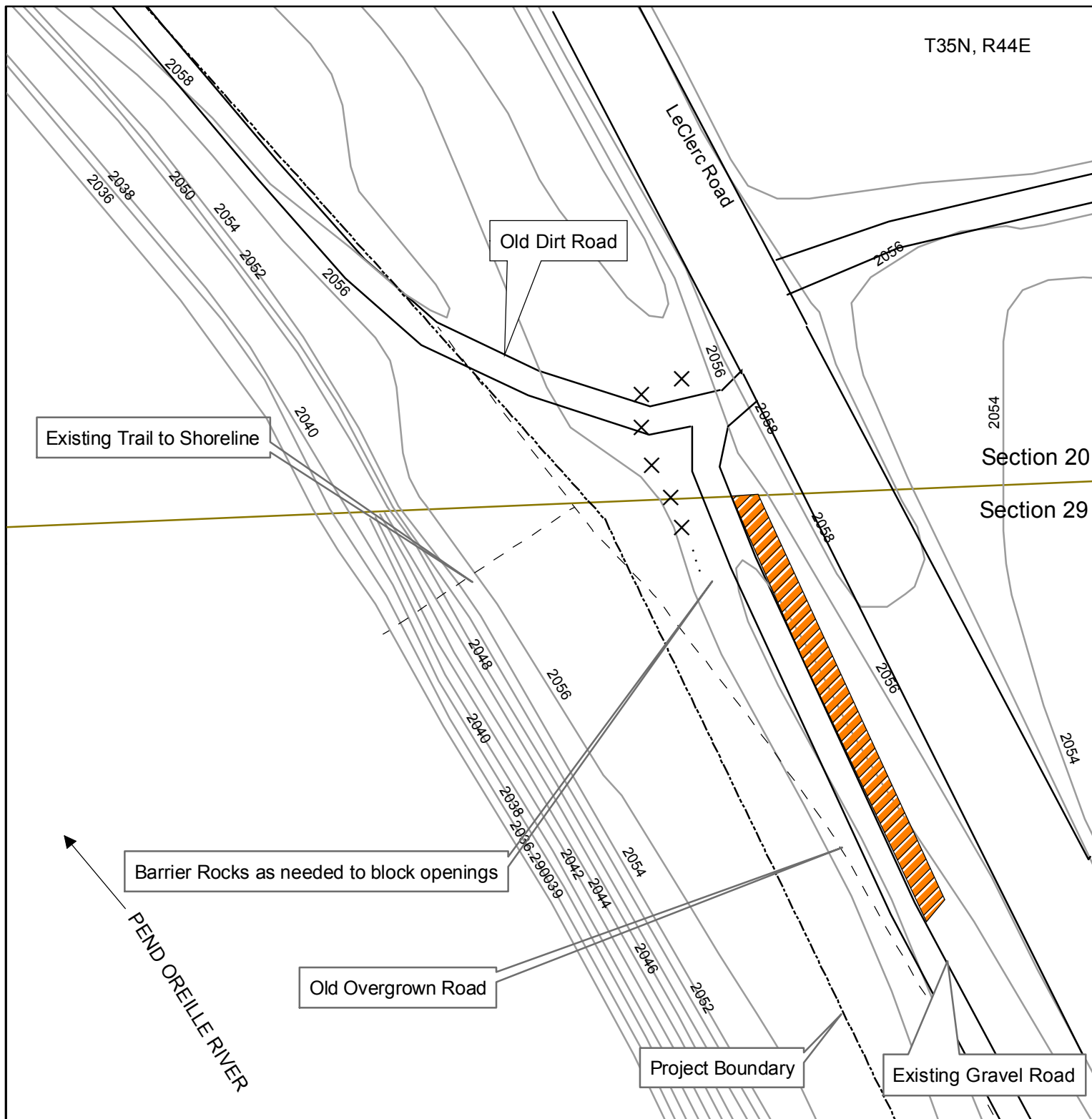


FIGURE 26
USFS LAND NORTH
OF PANHANDLE CAMPGROUND
WITH PROJECT BOUNDARY



Legend

- × Barrier Rocks
- - - Overgrown Road/Trails
- 2-foot Contours
- Roads
- - - Project Boundary
- Existing Parking

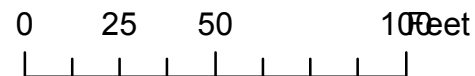


FIGURE 27
USFS LAND NORTH
OF PANHANDLE CAMPGROUND
SITE TOPOGRAPHY AND
BARRIER



FIGURE 28. GRAVEL ROAD/PARKING PARALLEL TO LECLERC ROAD



FIGURE 29. BOULDERS NEAR PARKING AREA TO PREVENT VEHICLE ACCESS

10 RESOURCE INTEGRATION AND COORDINATION

Because of the several Project resource management plans being implemented by the District, communication and coordination with various resource agencies, the Tribe and others, is necessary over the term of the new license. Management actions to assist in the integration, coordination and implementation of the RRMP and other Project resource management plans are described below.

10.1 Technical Committee

A Technical Committee including representatives from the Forest Service, other resource management agencies, and the Tribe, participates with the District in planning and decision making regarding resources in the Project Area. Subcommittees, including a Recreation Subcommittee, may assist in the development and implementation of resource plans. The Technical Committee and Subcommittee, if needed, will guide and advise the District in the development and preparation of resource plans, implementation of plans, and reviewing plans for and results of monitoring necessary to ensure that proposed measures achieve desired results. Refer to Attachment 4 for further information regarding the Technical Committee and Recreation Subcommittee.

The Technical Committee and Recreation Subcommittee will meet, as needed, throughout resource plan development and implementation.

10.2 Resource Integration, Coordination and Implementation Plans

The Technical Committee and Subcommittees provide the necessary ongoing and regular consultation and coordination among appropriate parties and specific license implementation resource groups. Since members of the Technical Committee and Subcommittees are involved in multiple Project-related resource management plans, resource integration and coordination is inherent in the duties and functions of the groups.

The District assesses the results of various monitoring and other plan activities and gathers them together into a report to be filed with FERC annually. Plans that have been developed, as outlined under DOI 4(e) Condition No. 1 (Implementation and Monitoring Plan [IMP] and Annual Reporting) and USFS 4(e) Condition No. 3 (Resource Coordination and Monitoring Implementation Plan [RCMP]), provide vehicles for reviewing and coordinating actions and monitoring outlined in other Project management plans including the Historical Properties Management, Erosion Monitoring Plan, Erosion Control, Prevention and Remediation plan, Comprehensive Wildlife Management Plan, and Shoreline Management Plan.

The IMP and RCMP ensure that efforts to protect Project resources are coordinated. Results of work will be shared with the Technical Committee members, and the IMP and RCMP will enable committee members to review annual data applicable to each plan in context with the others and to identify where results from one resource area may be helpful in another, or where efforts may be made more efficient or more effective in addressing resource needs within the

Project. The IMP and RCMP will ensure that the plans and activities required will be formulated to be effective at meeting the goals for protection of project resources.

11 RECREATION MONITORING

Monitoring of recreation use, activities and visitor preferences is an integral component of the RRMP and is necessary in determining future recreation management and facility needs. The District will monitor recreation use in the project area, as needed, to ensure that existing facilities are meeting future recreation demands and needs in the Project area. Project area recreation monitoring will be conducted on a schedule to conform with FERC Form 80 submittals. On-going monitoring of USFS sites will also be conducted. Recreation needs will be determined based on monitoring results, and application of recreation standards or trigger points, and monitoring reports will be prepared to summarize the results. Each of these components is described in more detail below.

11.1 Monitoring Methods

11.1.1 Project Area Monitoring

Recreation monitoring in the Project area will take place every 6 years to coincide with the required FERC Form 80 reporting requirement, and will be initiated at least one year prior to the FERC Form 80 submittal deadline (April 1). The objective of this monitoring schedule is to provide information regarding changes over time and to identify future management decisions to meet recreational needs in the Project area.

Recreation facilities available to the public along the BCR will be included in the monitoring program. A variety of monitoring methods may be utilized, depending on the recreation facility or area being monitored. Generally, monitoring methods may include a combination of on-site observations, surveys, and traffic counts, as well as review and analysis of existing recreation use and demand data. Based on monitoring methods used, a number of attributes may be evaluated including recreation facility use, recreation use by activities, boating use in BCR, dispersed use, displaced use, facility and area capacities, and review of visitor perceptions, attitudes and recreation desires.

Prior to initiating monitoring efforts, a study plan will be developed in consultation with the USFS, other relevant agencies and the Tribe. This will allow development of monitoring strategies that may evolve over the term of the license and reflect local and regional changes in recreation management requirements and needs. The monitoring study plan will provide specific details regarding goals and objectives, methods that will be used, monitoring schedules, data analysis, etc. The type and level of monitoring methods implemented, over the term of the license, will be based on readily available recreation information for the Project area, the anticipated level of recreation change in the Project area, and perceptions from recreation providers in the Project area.

A draft monitoring study plan will be developed for review and comment by the Technical Committee and Subcommittee, if applicable. A meeting would be held with the Technical Committee, to discuss the proposed monitoring study efforts. Following committee review and comments, a final monitoring study plan will be prepared incorporating any modifications that

are determined to be needed. The final study plan will be issued to the USFS, Tribe and other entities, and the plan will be implemented.

11.1.2 USFS Ongoing Monitoring

In addition to the monitoring described above for the Project area, the District will obtain daily USFS site visitation records for the Edgewater, Panhandle and Pioneer Park sites. The District will request this information annually (in December) for the preceding year. This data will be used to assess yearly use levels and average use levels over a rolling three-year period for the Edgewater, Panhandle and Pioneer Park sites. This use information will be provided to the USFS in February/March of each year, and will also be evaluated in conjunction with monitoring that will be conducted at recreation sites in the Project area (including USFS campgrounds) to fulfill FERC Form 80 monitoring requirements.

The results of the most current National Visitor Use Monitoring Project (NVUM) will be reviewed and included in the monitoring report related to the FERC Form 80 submittal.

11.2 Recreation Standards/Trigger Points/Visitor Opinions

Recreation demands and needs in the Project area will be determined based on results of monitoring, described in Section 11.1 above, and implementation of specific recreation standards and trigger points as described below.

11.2.1 Recreation Standards/Trigger Points for Project Recreation Sites

The general standard used in the recreation industry for identifying demands and needs for recreation facilities is 90 percent capacity. That is, recreation facilities are needed if recreation use levels exceed 90 percent of the facilities' capacity, determined by the higher of the two averages for peak-season weekdays or weekend days (pre-Memorial Day to post-Labor Day). This would be the trigger point that indicates a need for additional recreation facilities/enhancements, and/or review of management strategies and programs.

Visitor use estimates for recreation sites in the Project area will generally be based on observations and fee receipt data, where available, and may also include, surveys, boating observations, and traffic counts. These use estimates will be compared to the capacities of the campgrounds, picnic areas, parking areas, etc. Management strategies, facilities and/or enhancements will be reviewed at recreation sites in the Project area (with the exception of the USFS sites) when the 90--percent-of-capacity trigger point is reached, for the higher of the two averages for weekdays or weekend days monitored.

11.2.2 Recreation Standards/Trigger Points for USFS Sites

As required under Section 4(e), Condition 7, item 3 (b), the trigger point for reviewing recreation demands and needs at USFS Edgewater, Panhandle, and Pioneer Park sites shall be when visitor use levels exceed 40% of the capacity during the Managed Season of Use and 90% of the capacity during the Peak Use period (weekends during the July 1 to Labor Day period and intense-use holidays). Review of management strategies, facilities and/or enhancements at USFS sites will be initiated if these USFS site trigger points are reached. Annual USFS site visitation records will be used to determine yearly average use levels and over a rolling three-year period. Comparisons of facility capacities and visitor use estimates obtained from USFS visitation records, described above, will be utilized to determine if trigger points are reached.

11.2.3 Boating Use Standards

Boating use monitoring efforts may be utilized during some monitoring years (determined by the District and resource agencies).

General guidelines recommend a minimum of 140 vehicle/trailer space to 200 vehicle/trailer spaces at public boat launches, based on the size of BCR (District, 2000). These guidelines, unless updated or replaced by other standards, may be used to determine if additional vehicle/trailer parking spaces are needed in the Project area.

Standards are also available that suggest boating capacities for waterbodies. For a waterbody the size of BCR, suggested State Organization of Boating Administrators (SOBA) capacity is 33 acres per boat. BCR is approximately 10,000 acres, therefore, based on these recommendations, the reservoir could support 303 boats at one time. These guidelines, unless updated or replaced by other standards, may be used to determine if the boating capacity of the reservoir is exceeded. Monitoring efforts, specifically observation counts of boats, would be used to determine if recommended standards are exceeded and if managerial programs will need to be implemented.

11.2.4 Dispersed Use Triggers

During 1998 and 2008 monitoring, dispersed use at undeveloped public shorelines and islands in the BCR were documented. The type of use was documented by number of tents (x 3 persons/tent) for overnight, and number of people without tents for day use. Future monitoring of dispersed use may be conducted on occasion, as determined needed by the District and resource agencies. If results of monitoring efforts indicate an increase of over 10 percent in dispersed use at undeveloped public shorelines and islands since the 1998 and 2008 monitoring period, potential management actions and/or impact assessment should be reviewed.

11.2.5 Visitor Opinions

Visitors at recreation sites can provide information regarding recreation demands and may be conducted on occasion, as determined needed by the District and resource agencies. This type of information obtained from surveys can provide insights into the success of recreation management strategies, and recreation facility and/or enhancement needs in the Project area. In particular, visitor surveys should be designed to obtain the following information.

- Visitor opinions regarding specific recreation facilities needs to enhance their recreation experience.
- Visitor's opinions regarding crowding.
- Visitor's preferences - demand and needs will change over time based on increases in recreation use, changes in visitor demographics and potential emergence of new recreation technologies and preferences. Questions related to visitor preferences can be utilized to help identify future recreation demands and needs in the Project area.
- Displaced use - visitor surveys may also include questions to determine whether or not recreational areas near the Project area absorb use resulting directly from the presence of the BCR, or whether recreation sites at the BCR absorb use from nearby recreation sites that are too full or too crowded. These types of questions can be helpful in determining if increased recreation use at BCR is a result of overcrowding of nearby recreation sites, or if overcrowding of BCR recreation sites is impacting nearby recreation sites.

11.3 Monitoring Report

Following completion of monitoring efforts, a draft monitoring report will be prepared for review by the Technical Committee and the Recreation Subcommittee, if desired. A meeting will be held with the Technical Committee, and the subcommittee, if needed, to discuss the monitoring results. Following committee review and comments, a final monitoring report will be prepared that will include the following:

- Methodology used to collect all study data.
- Annual recreation use figures.
- Analysis of recreation demands and needs including a review of recreation standards/trigger points, and visitor demands
- Assessment of the adequacy of recreation facilities at the Project site to meet recreation needs.
- Documentation of agency/Tribe consultation with, and agency/Tribe comments on the monitoring report.

12 PLAN REVIEW AND REVISION

Recreation and resource conditions can be expected to change over time. It is likely that unforeseen recreation needs, changes in visitor preferences and attitudes, new recreation technologies, or other resource issues will arise over the course of the new license term. As a result, the RRMP will be reviewed and updated and/or revised, as needed.

The Recreation Resources Management Plan will be reviewed every six years to coincide with FERC's schedule for submittal of Form 80. The objective of this review schedule is to monitor and provide information regarding changes over time and to identify future management decisions to meet recreational needs.

If monitoring efforts, described in Section 11, identify a need for additional recreation management strategies, facilities and/or enhancements, a revised RRMP will be prepared. The revised RRMP would include the following:

- Proposed actions and schedule to accommodate identified recreation needs in the project area;
- Documentation of agency consultation with and agency comments on the revised plan after it has been prepared and provided to the agencies; and
- Specific descriptions of how the agencies' comments are accommodated by the revised plan.

A revised RRMP would be developed in consultation with the Technical Committee, and subcommittee, if needed. Draft copies of a preliminary revised RRMP would be provided to the Committee for review and to make comments and recommendations. A draft revised RRMP would be distributed to the Technical Committee for a minimum of 30 days for review, comment, and recommendations. The District would then incorporate comments and recommendations and file the revised RRMP with FERC. Meetings will be held with the Technical Committee and subcommittee, as needed. The revised RRMP would be implemented following FERC approval.

As stated, the RRMP will be reviewed every six years to coincide with FERC's Schedule for Form 80 submittal, and will be revised if monitoring identifies additional recreation needs. Other factors that may trigger revisions of the RRMP include:

- Amendment of the License as a result of Project changes.
- Revisions and/or updates to agency land and resource management plans that would affect the RRMP.
- New federal and state policies, regulations, and laws that significantly affect recreation resources in the Project area for the new license term.
- Significant changes in demographics, use patterns, or visitors needs that would require revision to the RRMP.

13 RRMP CONSULTATION

The 2006 Final RRMP was developed in consultation with interested agencies and the Kalispel Tribe. A Recreation Subcommittee consisting of representatives from interested agencies and the Tribe was assembled to provide a working group for development of the RRMP. A Technical Committee consisting of representatives from interested agencies and the Tribe was also established to provide final review and approval of the Plan. Attachment 4 lists the parties included in the Subcommittee and Technical Committee.

This 2010 Revised RRMP was developed to address changes due to the 2009 Settlement Agreement (revised USFS and DOI conditions) and resulting February 2010 License Amendment. A draft of this 2010 RRMP was distributed to the USFS, Tribe and DOI/Bureau of Indian Affairs (BIA) for review and comment. The FS also met with the District to discuss the plan, and to determine what actions should be taken to address changes in recreation demand at Forest Service facilities in the Project area, which were identified in the 2008 Form 80 recreation monitoring. Following the meeting a revised draft of the RRMP was developed incorporating comments received during the meeting.

The results of the meeting and written comments on the revised draft RRMP were incorporated into this final 2010 Revised RRMP. USFS and Tribe comment /approval letters are included in Attachment 4 of the RRMP. No comments were received from the BIA.

14 REFERENCES

DOI. 2005. US Department of Interior. Opposition of the Department of the Interior, the Department of Agriculture, and the Environmental Protection Agency to Emergency Petition for Writ of Mandamus at p. 16. No. 05-1307, In re: Public Utility District No.1 of Pend Oreille County, Washington, U.S. Court of Appeals for the District of Columbia.

District. 2009a. Public Utility District No. 1 of Pend Oreille County (District). March 2009. Box Canyon Hydroelectric Project No. 2042. 2008 Recreation Resources Monitoring and FERC Form 80 Report.

District. 2006b. Public Utility District No. 1 of Pend Oreille County (District). June 2006. Box Canyon Hydroelectric Project No. 2042. Recreation Resources Management Plan Final Report.

District. 2001a. Public Utility District No. 1 of Pend Oreille County (District). July 2001. Box Canyon Hydroelectric Project No. 2042. Response to FERC's Additional Information Request (AIR) Dated February 27, 2001.

District. 2001b. Public Utility District No. 1 of Pend Oreille County (District). August 2001. Box Canyon Hydroelectric Project No. 2042. Kalispel Tribal Recreation Survey Final Report.

District. 2001c. Public Utility District No. 1 of Pend Oreille County (District). November 2001. Box Canyon Hydroelectric Project No. 2042. 2000 and 2001 Recreation Use Study, Campbell Park and USFS Parks, Final Report.

District. 2000. Public Utility District No. 1 of Pend Oreille County (District). January 2000. Box Canyon Hydroelectric Project Final Application for New License (FLA). No. 2042

District. 1999a. Public Utility District No. 1 of Pend Oreille County (District). April 1999. Customer Mail Survey Study, Final Report. Box Canyon Hydroelectric Project. No. 2042

District. 1999b. Public Utility District No. 1 of Pend Oreille County (District). July 1999. Box Canyon Hydroelectric Project Draft Application for New License (DLA). No. 2042

District. 1999c. Public Utility District No. 1 of Pend Oreille County (District). December 1999. Recreation Use Assessment. Final Report. Box Canyon Hydroelectric Project. No. 2042

FERC. 2010. Federal Energy Regulatory Commission. February 2010. Order on Settlement Agreement and Amending License, Public Utility District No. 1 of Pend Oreille County, Box Canyon Hydroelectric Project No. 2042.

FERC. 2005. Federal Energy Regulatory Commission. July 2005. Order Issuing New License, Public Utility District No. 1 of Pend Oreille County, Box Canyon Hydroelectric Project No. 2042.

FERC. 2004a. Federal Energy Regulatory Commission. April 2004. Handbook for Hydroelectric Project Licensing and 5 MW Exemptions for Licensing.

FERC. 2004b. Federal Energy Regulatory Commission. September 2004. Final Environmental Impact Statement for Hydropower Relicensing, Box Canyon Hydroelectric Project No. 2042.

FERC. 1999. Order Approving Settlement Agreement and Amending License. FERC No. 2042. Federal Energy Regulatory Commission, Washington DC. February 26.

Kalispell Tribe. 2005. August 22, 2005. Motion of Kalispel Tribe of Indians for Leave to File Brief in Response to the District's Emergency Petition for Writ of Mandamus, at p.13. No.05-1307, In re: Public Utility District No.1 of Pend Oreille County, Washington, U.S. Court of Appeals for the District of Columbia.

USDA. 1995. United States Department of Agriculture, Forest Service. Inland Native Fish Strategy, Environmental Assessment. Pages E-5 and E-6.

USDA. 2004. United States Department of Agriculture, Forest Service. Recreation Heritage and Wilderness Resources Integrated Business System.

ATTACHMENT 1

EXAMPLE ROAD SIGNS

EXAMPLE COUNTY ROAD SIGN



EXAMPLE STATE HIGHWAY SIGNS



← PUBLIC BOAT LAUNCH



← PUBLIC SHORE ACCESS

ATTACHMENT 2

WASHINGTON DEPARTMENT OF TRANSPORTATION SIGN FABRICATION MANUAL SPECIFICATIONS FOR DESTINATION SIGNS

Sign Fabrication Manual

M 55-05

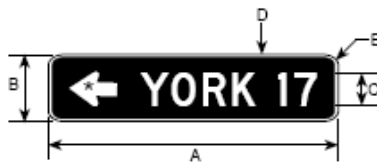


Washington State Department of Transportation
Maintenance and Operations - Traffic Operations Office

D1-101 & D1-201 & D1-301

10/97

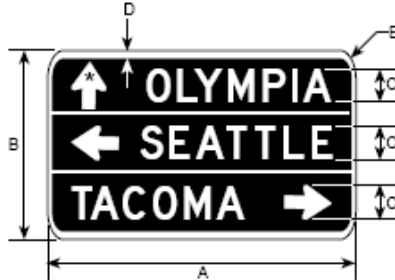
D1-101



D1-201



D1-301



* SEE APPENDIX FOR STANDARD DETAILS

SERIES D LETTERS ARE STANDARD.
SERIES C MAY BE USED AS A MINIMUM.

DELETE SEPARATION BORDER WHEN
DESTINATIONS ARE IN SAME DIRECTIONS.

DIMENSIONS (MILLIMETERS)						
SIGN CODE	MESSAGE LINES	A	B	C	D	E
D1-101	1	VAR	300	150D	19	38
D1-201	2	VAR	600	150D	19	38
D1-301	3	VAR	900	150D	19	38

DIMENSIONS (INCHES)						
SIGN CODE	MESSAGE LINES	A	B	C	D	E
D1-101	1	VAR	12	6D	3/4	1 1/2
D1-201	2	VAR	24	6D	3/4	1 1/2
D1-301	3	VAR	36	6D	3/4	1 1/2

COLORS

LEGEND — WHITE (REFL)

BACKGROUND — GREEN (REFL)

ATTACHMENT 3

EXAMPLE OF INVASIVE SPECIES SIGNS AT BOAT LAUNCHES

STOP

Harmful Species

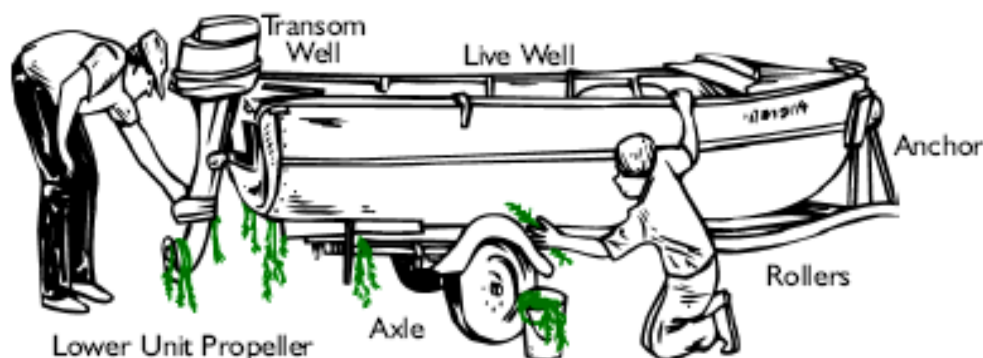


Aquatic weed specimens provided by
ORCA, Center for Aquatic Ecology
University of Washington, Seattle, WA 98195



Zebra Mussel

Unwanted plants and animals can ruin your favorite fishing and boating waters.



PLEASE!



- Remove **ALL** aquatic plants and animals.
- Drain water from your boat, trailer, tackle and gear before leaving the area.
- Do **NOT** empty aquariums or bait.

Unlawful to transport aquatic weeds, zebra mussels, or other aquatic nuisance species.

(RCW 77.12.020 RCW 17.24.061 WAC 16-752-510 WAC 232-12-01701)

To Report Sightings or for
more information, please
contact one of these agencies:



(360) 902-2200



(360) 407-6562



(360) 586-6599



(360) 753-9440

ATTACHMENT 4

RRMP AGENCY CONSULTATION

Sub-Committee Members

PUD			
	Name	Phone #	E-mail
habitat	Bart George	509-447-6788	bgeorge@popud.org
fish	Pat Buckley	509-447-9334	pbuckley@popud.org
erosion	Mark Cauchy	509-447-9331	mcauchy@popud.org
cultural	Mark Cauchy	509-447-9331	macuchy@popud.org
wildlife	Pat Buckley	509-447-9334	pbuckley@popud.org
recreation	Mark Cauchy	509-447-9331	macuchy@popud.org

USFW		
Name	Phone #	E-mail
Rick Donaldson	509-893-8009	rick_donaldson@fws.gov
Rick Donaldson	509-893-8009	rick_donaldson@fws.gov
Rick Donaldson	509-893-8009	rick_donaldson@fws.gov

BIA			
	Name	Phone #	E-mail
habitat	Robert Dach	503- 231-6711	rldach@yahoo.com
fish	Robert Dach	503- 231-6711	rldach@yahoo.com
erosion	Robert Dach	503- 231-6711	rldach@yahoo.com
cultural	Robert Dach	503- 231-6711	rldach@yahoo.com
wildlife	Robert Dach	503- 231-6711	rldach@yahoo.com
recreation	Robert Dach	503- 231-6711	rldach@yahoo.com

WDFW		
Name	Phone #	E-mail
Doug Robison	509-892-1001 ex 322	robisdlr@dfw.wa.gov
Doug Robison	509-892-1001 ex 322	robisdlr@dfw.wa.gov
Doug Robison	509-892-1001 ex 322	robisdlr@dfw.wa.gov
Doug Robison	509-892-1001 ex 322	robisdlr@dfw.wa.gov

Sub-Committee Members

USFS			
	Name	Phone #	E-mail
habitat	Glenn Koehn	509-684-7189	gkoehn@fs.fed.us
fish	Tom Shuhda	509-684-7000	tshuhda@fs.fed.us
erosion	Nancy Glines	509-684-7000	nglines@fs.fed.us
cultural	Steve Kramer	509-684-7000	skramer@fs.fed.us
wildlife	Mike Borceywich	509-684-7000	mborceywich@fs.fed.us
recreation	Jann Bodie	509-684-7000	jbodie@fs.fed.us

WADOE			
	Name	Phone #	E-mail
fish	Marcie Mangold	509-329-3450	dman461@ecy.wa.gov

Kalispel Tribe		
Name	Phone #	E-mail
Ray Entz	509-445-1147	rentz@knrd.org
Joe Maroney	509-445-1147	jmaroney@knrd.org
Ray Entz	509-445-1147	rentz@knrd.org
Kevin Lyons	509-445-1147	kjlyons@knrd.org
Ray Entz	509-445-1147	rentz@knrd.org
Ray Entz	509-445-1147	rentz@knrd.org

Other Subcommittee Members for RRMP:

Pend Oreille County:	<u>Name</u>	<u>Phone #</u>	<u>E-mail</u>
	Mike Lithgow	509-447-4821	mlithgow@pendoreille.org
Town of Cusick:	Robert Spencer	509-442-0082	cronrathm@msn.com
	Charlotte Yergens	509-442-0082	cusick@itss.net
Oldtown, Idaho:	Lonnie Orr	208-437-3833	

Box Canyon Resource Technical Committee

- Members
 - POPUD Scott Jungblom
 - BIA Robert Dach
 - USFW Rick Donaldson
 - USFS Glen Koehn
 - WDFW Doug Robison
 - Kalispel Tribe Dean Osterman
 - WADOE Marcie Mangold
 - IDFG has not responded
- Duties and Functions
 - Guide and advise the Licensee in preparation of plans and reports required by the Secretary of the Interior, Forest Supervisor, and Kalispel Tribe
 - Review and provide comments on drafts of plans and reports
 - Identify, develop, and review specific measures appropriate to the carrying out of condition requirements
 - Identify, develop, and review plans for implementing identified measures
 - Identify, develop, and review short and long term monitoring of identified measures
 - Ensure all proposed measures adhere to scientifically sound principles and are implemented in a cost effective manner
 - Prepare and review scopes of work
 - Prepare and review proposals to implement
 - Make recommendations on the selection of contractors and/or means of implementing
- Scopes of Work
 - Detailed scope of work for each project containing:
 - Description of task
 - Description of implementation method
 - Schedule
 - Budget
 - Monitor and oversight
 - Interim and final reports
 - Identify potential bidders
- Selection and Approval of Contractors
 - As agreed by the Tech Committee
 - By the Licensee through a qualified contractor bidding process
 - By any other member of the Tech Committee
- Bidding and Procurement
 - Licensee advertises for bids or statement of qualifications
 - Tech Committee members can bid
 - All bids go to the non-bidding Tech Committee members for evaluation and recommendation to the Licensee

- If Licensee rejects the Tech Committee recommendation –
 - It must be in writing
 - Licensee submits list of acceptable contractors
 - Non-bidding Tech Committee members evaluate and recommend
 - Loop continues until a contractor is accepted
- Determination Regarding Proper Expenditure of Funds
 - Funds to be spent only for:
 - Protection, enhancement, or mitigation of erosion control
 - Water quality
 - Fish and wildlife resources
 - Cultural resources
 - Recreation
 - Other resources as provided for in conditions
 - If specific funding amount is not specified in conditions, the Tech Committee will determine funding amount
- Administration of Contracts
 - The Licensee shall –
 - Administer each contract in accordance with law
 - Provide annual report to the Tech Committee and FERC
 - Make available copies of all contract documents, reports, and products
 - Be responsible for funding all contract administration costs
- Subcommittees
 - Tech Committee may form subcommittees
 - Licensee has the right to be represented on all subcommittees
 - Subcommittees are subject to all forgoing terms and conditions
 - Licensee will furnish reasonable administrative, clerical, and support facilities
 - Licensee is responsible only for funding its own participation on the Tech Committee or any subcommittee
- Dispute Resolution
 - Strive for consensus
 - If consensus not possible, majority rules
 - Any Tech Committee member may raise a dispute in writing and the Tech Committee will engage in good faith discussions for a period not to exceed 10 days
 - If agreement cannot be reached, the Tech Committee will engage the services of a mutually agreed upon third party facilitator
 - Nothing limits or substitutes for the authority of the Secretary of the Interior (with regard to Interior 4(e) conditions and Sec 18 conditions), the FERC (with regard to license conditions), and the Forest Service Forest Supervisor (with regard to Forest Service 4(e) conditions)

CONSULTATION LETTERS



United States
Department of
Agriculture

Forest
Service

Colville
National
Forest

Headquarters Office
765 South Main
Colville, WA 99114
509-684-7000
Fax: 509-684-7280

File Code: 2770

Date: August 13, 2010

Mark Cauchy
Director, Regulatory and Environmental Affairs
Pend Oreille County PUD
PO Box 190
Newport, WA 99156

P.U.D. NO. 1
of Pend Oreille Co.
AUG 17 2010
Received By _____
OK To File _____

RE: Box Canyon Hydroelectric Project, FERC No. 2144
Revised Recreation Resource Management Plan

Dear Mr. Cauchy:

The USDA Forest Service received, from the Pend Oreille County Public Utility District (PUD), a draft copy of the Revised Recreation Resource Management Plan (RRMP) back in June 2010 for review and comments. Staff from the Colville National Forest met with you and your staff on July 21, 2010 to discuss these comments, as well as the 2008 recreation monitoring results. We received the draft final revised RRMP on August 8, 2010.

During the discussion of the recreation monitoring results it was tentatively decided that in order to address the impacts from exceeding capacity at Pioneer Park (Forest Service License Condition No. 7) the PUD would work with the Pend Oreille River Tourism Alliance (PORTA) to produce a brochure to be used to advertise campgrounds available in the area near Newport. This would be a relatively easy and inexpensive way to try and relieve some use pressure at Pioneer Park.

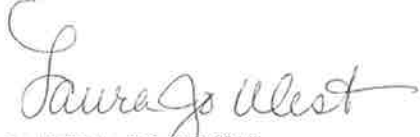
In the draft final revised RRMP the development of the brochure is mentioned as an "option" (Page 40 – 41) along with other ideas. There is no specific commitment on the part of the PUD to pursue the development of the brochure.

Through this letter the USDA Forest Service approves the revised RRMP as it pertains to National Forest System lands with the proviso that the PUD help develop and fund the production of a brochure, for general distribution, as outlined in the RRMP and tentatively agreed to at the July 21, 2010 meeting.



Please contact Glenn Koehn, Forest Hydropower Coordinator, at (509) 684-7189 if you have any questions.

Sincerely,

A handwritten signature in cursive script that reads "Laura Jo West". The signature is written in dark ink and is positioned above the printed name.

LAURA JO WEST
Forest Supervisor

cc: FERC, Walt Dortch, John Buehler

Mark Cauchy

From: Ray Entz [rentz@kalispeltribe.com]
Sent: Friday, September 17, 2010 9:48 AM
To: Mark Cauchy; Robert Dach (rldach@yahoo)
Cc: Deane Osterman
Subject: RE: RRMP

Mark,

I have read the RRMP and find that the Tribe has no comments to make on the Plan as written. We concur that the changes to the Plan are supportive of the Settlement Agreement and we are supportive of the RRMP as written.

Thank you for accepting our comments.

RDE

From: Mark Cauchy [mailto:mcauchy@popud.org]
Sent: Thursday, September 16, 2010 4:09 PM
To: Ray Entz; Robert Dach (rldach@yahoo)
Cc: Joe Maroney
Subject: RRMP

Ray & Bob,
We are planning to file this with FERC by the end of next week and would like to have some acknowledgement from you.

We have revised the plan to be consistent with the revised conditions on recreation brought about through the Box Canyon Settlement Agreement, particularly Appendix D Tribal Recreation. The wording in the revised RRMP is now consistent with the Settlement Agreement and FERC order on the amended license.

If you concur that the changes in the plan meet the revised conditions please let us know by letter or email by the end of next week.

Let me know if you have any questions.

Thanks,

Mark Cauchy
mcauchy@popud.org
Pend Oreille PUD
PO Box 190
Newport, WA 99156
509-447-9331

9/17/2010