

A decorative graphic on the left side of the page consists of white, stylized circuit lines and nodes. The lines are vertical and horizontal, with small circles at the ends, resembling a printed circuit board or a network diagram. The background is a gradient of blue, transitioning from a lighter shade at the top to a darker shade at the bottom.

PEND OREILLE PUD FLEET

Trucks or Bucket Trucks with a GVW of less than 26,000 lbs.

Diesel powered vehicles should be replaced at no more than ten years 150,000 miles, accumulative PTO hours of 5,000 or total engine hours/idle time of 7,500 hours, whichever comes first unless the vehicle is deemed fit for service by the Director of Operations or General Manager

Trucks with a GVW greater than 26,000 lbs.

If one or more of the following criteria exceeds their maximum allowable limit, the vehicle should be replaced: no more than ten years of service with no regard to mileage, accumulative PTO hours exceeding 5,000 or total engine hours/idle time exceeding 7,500 hours, whichever comes first unless the vehicle is deemed fit for service by the Director of Operations or General Manager



2020



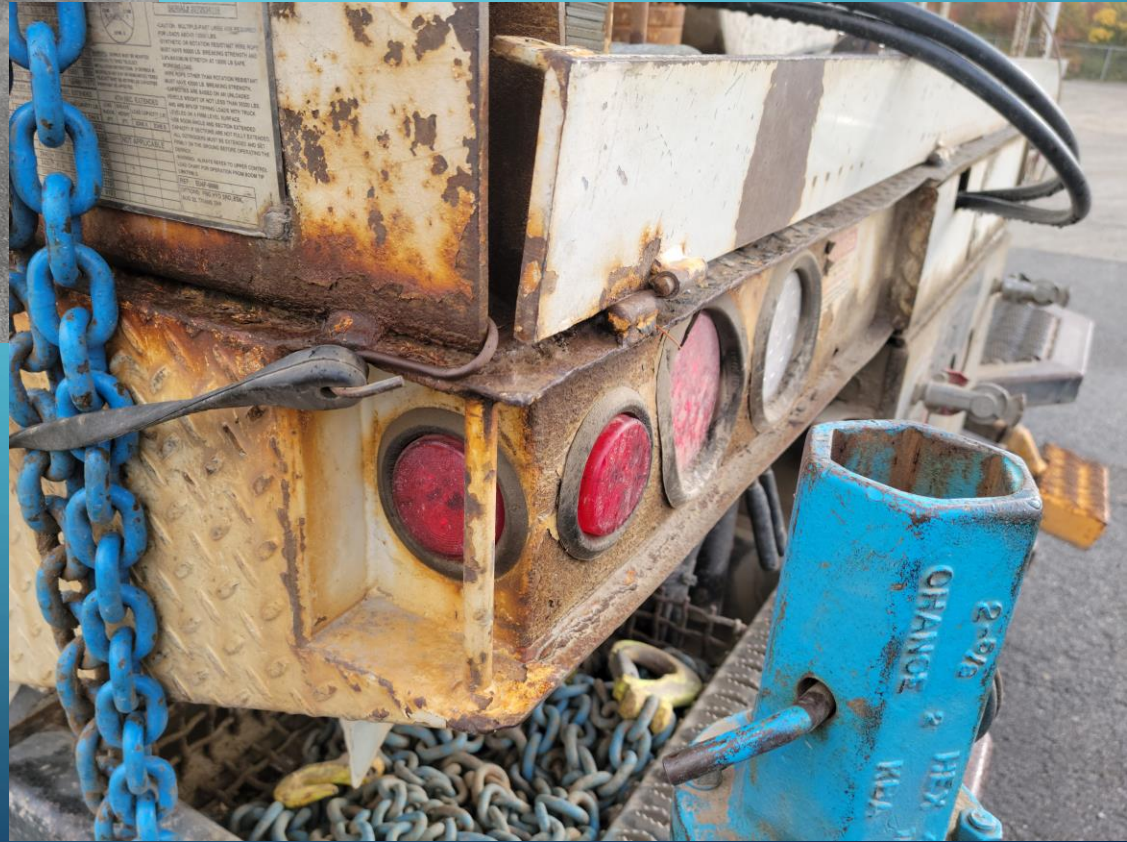
2016



2007



2008









2007





2007

246,000









1990